

Bob Judge, Government Loan Solutions, Editor



Bob Judge is a partner at Government Loan Solutions.

Government Loan Solutions is a provider of valuation services, prepayment analytics and operational support for the SBA marketplace.

Bob has 25 years of experience in the fixed income markets. He holds a B.A. in Economics from Vassar College and an M.B.A. in Finance from NYU Stern School of Business.

INSIDE THIS ISSUE:

Special points of interest:

- CPRs Rise 37%
- SBI—Historical Returns
- Debenture Speeds
- SMA Update

7a Prepayment Speeds **1-3, 18-20**

SBI Indexes **1 & 4-5**

SMA **7**

504 Debenture Speeds **1, 8-10**

Default Rate **14**

Default Curtailment Ratios **14 & 21**

Value Indices **15-17**

Sale & Settlement Tip **13**

OFF 2012 LOW, 7A CPRs RISE 37%

In November, prepays bounced off 2012 lows, rising above CPR 6% for the third time this year.

As for the detail, prepayments rose 37% to 6.24% from 4.52%, creating a new 2012 high. The previous high was 6.20% seen in January.

In comparing prepayment speeds for the first eleven

months of 2012 to the same period for 2011, 2012 is currently spot on with last year. Both years show a 5.54%YTD CPR for all outstanding pools. Next month will decide the winner.

As for the largest sector of the market, 20+ years to maturity, prepayment speeds rose by 52% to 5.56% from 3.67%.

Turning to the CPR breakdown, the default CPR rose by 46% to 2.26% from the 12-year low of 1.54% last month. While on a percentage basis this increase seems high, one must remember that it comes off an extremely low reading in October.

Article continued on page 3, graphs on page 2 and data on pages 18-20.

SMALL BUSINESS INDEXES: HISTORICAL RETURNS

Welcome to the second month of our reporting on the status of Small Business Indexes, or SBI, which we introduced at the 5th Annual SBA Secondary Market Forum held in December.

For those who missed it, or don't have access to last month's Report, we have added a full description of the various indexes to the Glossary, that begins on page 23.

This month, we have decided to present returns for the various pool and strip indexes, as of

Continued on page 4

20 YEAR DEBENTURE SPEEDS RISE BY 2%

This month, 20 year debenture speeds rose by 1.67%, reaching 8.59% from 8.45% in November. This is an "off-month" for 10 year debentures, so we have no update for that sector.

ments (CRR) increased. The CDR increased by 3.55%, going from 2.95% to 3.06%. This reading above 3% is the first one in three months.

print in the past five months. The last time we saw consistent 5%+ readings was in late 2008, just prior to the failure of Lehman Brothers.

Returning to 20s, both defaults (CDR) and voluntary prepay-

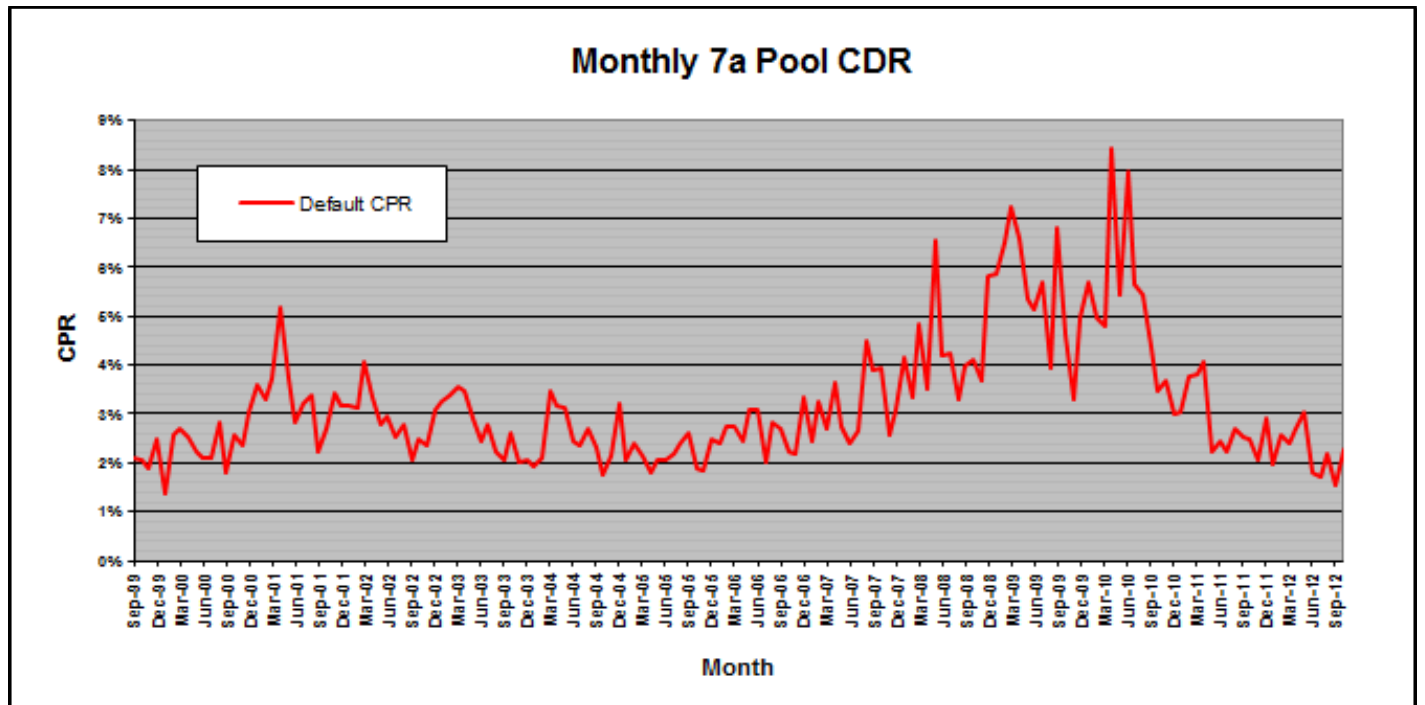
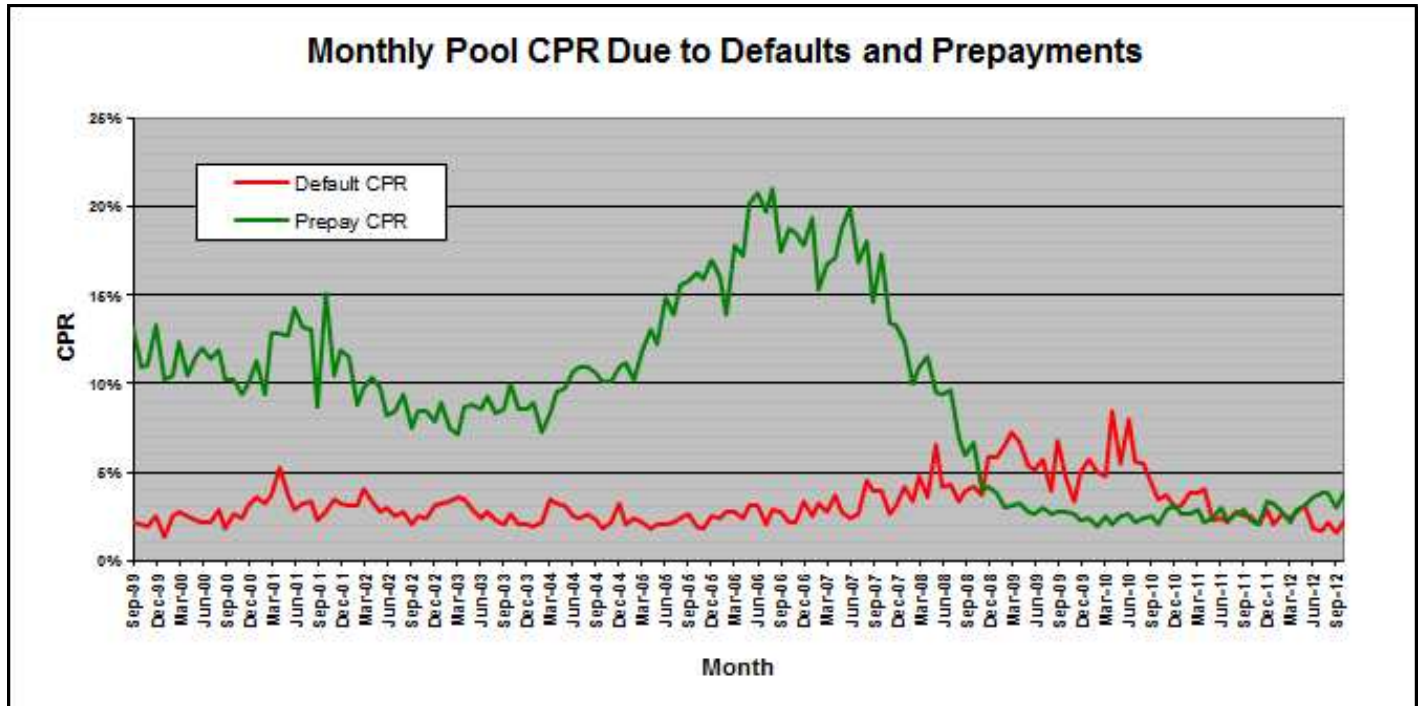
The CRR rose slightly, increasing .65% to 5.53% from 5.49%. This reading is the fourth 5%+

Continued on page 8-10

SMALL BUSINESS FACT OF THE MONTH

According to the Brookings Institute, 2 out of 3 small firms are ventures that likely won't grow big, from plumbers to lawyers to shopkeepers.

PREPAYMENT SPEEDS...CONTINUED



Bob Judge can be reached at (216) 456-2480 ext. 133 or
bob.judge@glolutions.us

PREPAYMENT SPEEDS...CONTINUED

Regarding voluntary prepayments, they also rose by double-digits, increasing 33% to 3.98%. After a one-month hiatus of sub-3% readings, we are back into the high 3's we have seen since July.

As previously stated, overall speeds came in at 6.24%, a 38% increase from October. This month continues an unbroken streak of 26 consecutive months of sub-7% prepay speeds.

As for next month, preliminary data from Colson suggests a return to sub-6% prepayment speeds as we end 2012 on a positive note.

Turning to the default/voluntary prepayment breakdown, the **Voluntary Prepay**

CPR (green line) rose to 3.98% from 2.98%, a 33% increase. While the VCPR rose back above 3%, the **Default CPR (red line)** increased by 46% to 2.26% from 1.54% the previous month.

Prepayment speeds rose in all six maturity categories. Increases were seen, by order of magnitude, in the <8 sector (+155% to CPR 16.56%), 8-10 (+71% to CPR 8.25%), 13-16 (+60% to CPR 6.03%), 16-20 (+52% to CPR 6.50%), 20+ (+51% to CPR 5.56%) and 10-13 (+1% to CPR 6.72%).

This month, we witnessed a rebound from the extremely low CPR and default rate seen in October. Next month should look more in line with

the entire year, with a final entry in the mid 5's as we head into 2013.

For further information on the terminology and concepts used in this article, please refer to the "Glossary and Definitions" at the end of the report.

"This month, we witnessed a rebound from the extremely low CPR and default rate seen in October. Next month should look more in line with the entire year, with a final entry in the mid 5's as we head into 2013."

Data on page 18-20



Thomas USAF

Increase your premium dollars by eliminating brokerage fees. Sell your USDA B&I and CF Loans "Investor Direct" to Thomas USAF, America's largest direct investor.

Contact Mike (404) 365-2040 or Vasu at (404) 365-2030

SMALL BUSINESS INDEXES...CONTINUED

END DATE: 12/31/2012	SBI POOL INDEX TOTAL RETURN							
INDEX TYPE	1 MONTH	3 MONTH	6 MONTH	1 YEAR	3 YEAR	5 YEAR	10 YEAR	INCEPTION
POOL, ALL EQUAL INDEX	0.16%	0.51%	1.40%	3.46%	20.69%	42.78%	80.63%	116.22%
POOL, ALL ACTUAL INDEX	0.18%	0.54%	1.49%	3.20%	14.53%	28.29%	60.10%	91.19%
POOL, LONG EQUAL INDEX	0.18%	0.54%	1.46%	3.67%	24.40%	51.58%	92.92%	131.18%
POOL, LONG ACTUAL INDEX	0.20%	0.56%	1.55%	3.31%	16.55%	32.85%	66.64%	99.18%
POOL, SHORT EQUAL INDEX	0.12%	0.45%	1.26%	2.93%	12.18%	23.91%	52.81%	82.00%
POOL, SHORT ACTUAL INDEX	0.14%	0.49%	1.34%	2.92%	9.97%	18.89%	45.81%	73.21%
POOL, ALL EQUAL INCOME INDEX	0.21%	0.61%	1.23%	3.19%	19.73%	43.02%	95.50%	135.90%
POOL, ALL ACTUAL INCOME INDEX	0.21%	0.63%	1.25%	2.85%	13.51%	28.49%	72.30%	107.13%
POOL, LONG EQUAL INCOME INDEX	0.19%	0.55%	1.09%	3.09%	22.17%	49.79%	105.39%	147.76%
POOL, LONG ACTUAL INCOME INDEX	0.19%	0.56%	1.12%	2.67%	14.32%	31.20%	76.14%	111.69%
POOL, SHORT EQUAL INCOME INDEX	0.27%	0.79%	1.58%	3.45%	14.05%	28.27%	73.89%	111.33%
POOL, SHORT ACTUAL INCOME INDEX	0.27%	0.80%	1.61%	3.36%	11.72%	22.97%	65.29%	100.01%
POOL, ALL EQUAL PRICE INDEX	0.03%	0.10%	0.56%	0.96%	2.58%	2.33%	(0.02%)	0.90%
POOL, ALL ACTUAL PRICE INDEX	0.04%	0.11%	0.61%	1.04%	2.65%	2.32%	0.05%	0.93%
POOL, LONG EQUAL PRICE INDEX	0.05%	0.14%	0.64%	1.05%	3.00%	2.77%	0.37%	1.38%
POOL, LONG ACTUAL PRICE INDEX	0.06%	0.14%	0.69%	1.11%	3.08%	2.73%	0.46%	1.42%
POOL, SHORT EQUAL PRICE INDEX	(0.03%)	0.01%	0.35%	0.73%	1.57%	1.26%	(0.96%)	(0.77%)
POOL, SHORT ACTUAL PRICE INDEX	(0.02%)	0.03%	0.40%	0.83%	1.66%	1.38%	(0.97%)	(0.77%)
POOL, ALL EQUAL PREPAY INDEX	(0.04%)	(0.11%)	(0.20%)	(0.35%)	(0.88%)	(1.38%)	(5.77%)	(7.11%)
POOL, ALL ACTUAL PREPAY INDEX	(0.04%)	(0.10%)	(0.19%)	(0.34%)	(0.86%)	(1.36%)	(5.34%)	(6.56%)
POOL, LONG EQUAL PREPAY INDEX	(0.04%)	(0.09%)	(0.16%)	(0.27%)	(0.65%)	(0.97%)	(5.30%)	(6.65%)
POOL, LONG ACTUAL PREPAY INDEX	(0.03%)	(0.08%)	(0.15%)	(0.26%)	(0.62%)	(0.91%)	(4.79%)	(6.03%)
POOL, SHORT EQUAL PREPAY INDEX	(0.05%)	(0.16%)	(0.31%)	(0.54%)	(1.44%)	(2.34%)	(7.14%)	(8.43%)
POOL, SHORT ACTUAL PREPAY INDEX	(0.11%)	(0.34%)	(0.67%)	(5.60%)	(6.44%)	(7.33%)	(11.60%)	(12.73%)
POOL, ALL EQUAL SCHED PRIN INDEX	(0.03%)	(0.09%)	(0.18%)	(0.34%)	(0.86%)	(1.08%)	(1.93%)	(2.20%)
POOL, ALL ACTUAL SCHED PRIN INDEX	(0.03%)	(0.09%)	(0.18%)	(0.35%)	(0.86%)	(1.08%)	(1.88%)	(2.12%)
POOL, LONG EQUAL SCHED PRIN INDEX	(0.02%)	(0.06%)	(0.11%)	(0.21%)	(0.50%)	(0.56%)	(1.18%)	(1.39%)
POOL, LONG ACTUAL SCHED PRIN INDEX	(0.02%)	(0.06%)	(0.11%)	(0.21%)	(0.48%)	(0.53%)	(1.09%)	(1.28%)
POOL, SHORT EQUAL SCHED PRIN INDEX	(0.06%)	(0.19%)	(0.36%)	(0.69%)	(1.76%)	(2.32%)	(4.44%)	(5.21%)
POOL, SHORT ACTUAL SCHED PRIN INDEX	(0.06%)	(0.19%)	(0.37%)	(0.70%)	(1.77%)	(2.32%)	(4.36%)	(5.08%)
POOL, ALL EQUAL TOTAL PRIN INDEX	(0.07%)	(0.20%)	(0.39%)	(0.69%)	(1.73%)	(2.44%)	(7.59%)	(9.15%)
POOL, ALL ACTUAL TOTAL PRIN INDEX	(0.07%)	(0.20%)	(0.38%)	(0.69%)	(1.71%)	(2.42%)	(7.12%)	(8.54%)
POOL, LONG EQUAL TOTAL PRIN INDEX	(0.06%)	(0.15%)	(0.28%)	(0.48%)	(1.14%)	(1.53%)	(6.42%)	(7.96%)
POOL, LONG ACTUAL TOTAL PRIN INDEX	(0.05%)	(0.14%)	(0.27%)	(0.47%)	(1.10%)	(1.44%)	(5.83%)	(7.23%)
POOL, SHORT EQUAL TOTAL PRIN INDEX	(0.11%)	(0.34%)	(0.67%)	(1.23%)	(3.17%)	(4.61%)	(11.27%)	(13.21%)
POOL, SHORT ACTUAL TOTAL PRIN INDEX	(0.11%)	(0.34%)	(0.67%)	(1.24%)	(3.18%)	(4.63%)	(10.92%)	(12.73%)

12/31/2012, along with their components over various time horizons.

The data can be found on pages 4 and 5.

One thing that stands out are the steady returns of the pool indexes over the years, as well as the significant returns on the more volatile strip indexes, especially over the past five years.

Please note that any principal sub-index, such as prepayment and scheduled principal payments, are always negative, since principal payments will lower returns for premium pools (the largest component of the indexes), as well as strips, which represents "pure" premium.

If you wish to further delve into the SBI Indexes, please visit our website at www.sbindexes.com. Registration is currently free and it contains a host of information relating to these indexes, as well as indexing in general.

For further information on the SBI Indexes, please refer to the "Glossary and Definitions" at the end of the report.

Continued on next page



Signature Securities Group, located in Houston, TX, provides the following services to meet your needs:

- SBA Loans and Pools
- Assistance meeting CRA guidelines
- USDA B&I and FSA Loans
- Fixed Income Securities

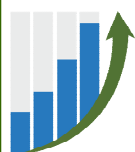
For more information, please call
Toll-free 1-866-750-7150

Securities and Insurance products are:

• NOT FDIC INSURED • NO BANK GUARANTEE • MAY LOSE VALUE Signature Securities Group Corporation (SSG), member of FINRA/SIPC, is a registered broker dealer, registered investment advisor and licensed insurance agency. SSG is a wholly owned subsidiary of Signature Bank.

SMALL BUSINESS INDEXES...CONTINUED

END DATE: 12/31/2012	SBI STRIP INDEX TOTAL RETURN							
INDEX TYPE	1 MONTH	3 MONTH	6 MONTH	1 YEAR	3 YEAR	5 YEAR	10 YEAR	INCEPTION
STRIP, ALL EQUAL INDEX	0.85%	3.14%	10.81%	32.11%	122.87%	354.37%	150.19%	423.55%
STRIP, ALL ACTUAL INDEX	3.53%	10.13%	25.24%	61.75%	156.29%	332.19%	155.26%	432.40%
STRIP, LONG EQUAL INDEX	1.70%	5.17%	14.42%	32.83%	171.88%	570.30%	261.84%	678.93%
STRIP, LONG ACTUAL INDEX	4.16%	12.93%	31.86%	66.61%	210.19%	504.02%	235.64%	614.03%
STRIP, SHORT EQUAL INDEX	(0.56%)	(0.17%)	5.14%	30.92%	66.05%	165.01%	35.85%	135.33%
STRIP, SHORT ACTUAL INDEX	2.44%	5.48%	14.99%	53.69%	95.37%	184.39%	64.13%	217.13%
STRIP, ALL EQUAL INCOME INDEX	1.14%	3.44%	7.21%	17.85%	96.01%	251.08%	737.56%	1,812.66%
STRIP, ALL ACTUAL INCOME INDEX	3.37%	9.59%	19.20%	40.76%	116.46%	232.84%	671.39%	1,645.83%
STRIP, LONG EQUAL INCOME INDEX	1.31%	4.02%	8.44%	20.67%	122.25%	350.10%	1,007.96%	2,455.04%
STRIP, LONG ACTUAL INCOME INDEX	3.64%	11.51%	23.96%	50.09%	147.64%	303.05%	849.24%	2,067.39%
STRIP, SHORT EQUAL INCOME INDEX	0.85%	2.49%	5.26%	13.35%	62.65%	151.36%	438.44%	1,051.59%
STRIP, SHORT ACTUAL INCOME INDEX	2.90%	6.39%	11.78%	26.71%	77.34%	158.80%	464.96%	1,099.57%
STRIP, ALL EQUAL PRICE INDEX	0.70%	2.57%	9.34%	24.78%	57.17%	149.51%	70.67%	145.01%
STRIP, ALL ACTUAL PRICE INDEX	1.04%	3.15%	10.69%	27.24%	62.70%	151.10%	78.12%	159.44%
STRIP, LONG EQUAL PRICE INDEX	1.13%	3.09%	9.65%	18.37%	52.00%	145.73%	62.93%	139.22%
STRIP, LONG ACTUAL PRICE INDEX	1.16%	3.08%	10.11%	18.68%	54.01%	145.02%	66.84%	146.92%
STRIP, SHORT EQUAL PRICE INDEX	(0.01%)	1.69%	8.77%	36.09%	66.01%	153.63%	77.20%	114.75%
STRIP, SHORT ACTUAL PRICE INDEX	0.85%	3.25%	11.59%	42.32%	77.89%	164.59%	87.45%	156.10%
STRIP, ALL EQUAL PREPAY INDEX	(0.51%)	(1.40%)	(2.74%)	(4.94%)	(14.59%)	(32.01%)	(72.58%)	(81.35%)
STRIP, ALL ACTUAL PREPAY INDEX	(0.44%)	(1.27%)	(2.47%)	(4.65%)	(14.27%)	(32.29%)	(71.02%)	(80.49%)
STRIP, LONG EQUAL PREPAY INDEX	(0.48%)	(1.13%)	(2.19%)	(3.90%)	(11.38%)	(28.90%)	(73.00%)	(81.92%)
STRIP, LONG ACTUAL PREPAY INDEX	(0.40%)	(1.01%)	(1.91%)	(3.54%)	(10.89%)	(28.89%)	(71.88%)	(81.38%)
STRIP, SHORT EQUAL PREPAY INDEX	(0.58%)	(1.86%)	(3.60%)	(6.62%)	(19.14%)	(36.13%)	(69.58%)	(76.47%)
STRIP, SHORT ACTUAL PREPAY INDEX	(0.51%)	(1.70%)	(3.38%)	(6.46%)	(18.83%)	(36.57%)	(67.79%)	(75.16%)
STRIP, ALL EQUAL SCHED PRIN INDEX	(0.47%)	(1.40%)	(2.80%)	(5.46%)	(15.41%)	(23.94%)	(35.47%)	(39.70%)
STRIP, ALL ACTUAL SCHED PRIN INDEX	(0.44%)	(1.32%)	(2.66%)	(5.24%)	(15.23%)	(23.85%)	(35.24%)	(39.41%)
STRIP, LONG EQUAL SCHED PRIN INDEX	(0.27%)	(0.80%)	(1.61%)	(3.20%)	(9.29%)	(14.98%)	(24.75%)	(28.88%)
STRIP, LONG ACTUAL SCHED PRIN INDEX	(0.25%)	(0.75%)	(1.49%)	(2.98%)	(8.81%)	(14.20%)	(23.65%)	(27.76%)
STRIP, SHORT EQUAL SCHED PRIN INDEX	(0.80%)	(2.37%)	(4.68%)	(9.07%)	(24.04%)	(35.18%)	(52.79%)	(59.27%)
STRIP, SHORT ACTUAL SCHED PRIN INDEX	(0.76%)	(2.30%)	(4.57%)	(8.88%)	(23.84%)	(34.77%)	(51.53%)	(58.27%)
STRIP, ALL EQUAL TOTAL PRIN INDEX	(0.98%)	(2.79%)	(5.47%)	(10.15%)	(27.80%)	(48.38%)	(82.38%)	(88.81%)
STRIP, ALL ACTUAL TOTAL PRIN INDEX	(0.88%)	(2.58%)	(5.07%)	(9.66%)	(27.38%)	(48.53%)	(81.31%)	(88.24%)
STRIP, LONG EQUAL TOTAL PRIN INDEX	(0.74%)	(1.93%)	(3.77%)	(6.98%)	(19.64%)	(39.60%)	(79.74%)	(87.19%)
STRIP, LONG ACTUAL TOTAL PRIN INDEX	(0.65%)	(1.75%)	(3.38%)	(6.42%)	(18.77%)	(39.04%)	(78.59%)	(86.59%)
STRIP, SHORT EQUAL TOTAL PRIN INDEX	(1.38%)	(4.20%)	(8.14%)	(15.14%)	(38.67%)	(58.73%)	(85.74%)	(90.50%)
STRIP, SHORT ACTUAL TOTAL PRIN INDEX	(1.28%)	(3.98%)	(7.82%)	(14.81%)	(38.28%)	(58.76%)	(84.49%)	(89.71%)



SB Indexes, LLC

Through the joint venture of Ryan ALM, Inc. and GLS, both companies have brought their unique capabilities together to create the first Total Return Indexes for SBA 7(a) Pools and SBA 7(a) Interest-Only Strips, with a history going back to January 1st, 2000.

Using the "Ryan Rules" for index creation, the SBI indexes represent best practices in both structure and transparency.

For more information, please visit our website:

www.SBIndexes.com

Principals:

Ronald J. Ryan, CFA, Founder and CEO of Ryan ALM, Inc. Ron has a long history of designing bond indexes, starting at Lehman Brothers, where he designed most of the popular Lehman bond indexes. Over his distinguished career, Ron and his team have designed hundreds of bond indexes and ETFs.

Bob Judge, Partner, GLS. Bob, a recognized expert in the valuation of SBA-related assets as well as the SBA Secondary Market and is the editor of The CPR Report, a widely-read monthly publication that tracks SBA loan defaults, prepayment and secondary market activity.

Give Your Bank A True Competitive Advantage



nCino's nCommercial software solution was created by bankers to drive increased profitability, productivity, and regulatory compliance. Sitting alongside a bank's core, it provides the security of a SAS 70 Type II cloud architecture, the most advanced data security platform in the world. And the real-time portfolio management tools, reports, and dashboards provide complete operating transparency and features 1502 reporting.

See how these banks are already experiencing the benefits at <http://ncino.com>



SECONDARY MARKET ACCESS...FMLP UPDATE

MO / WAM BUCKET	<192 Mos.	192-263 Mos.	264-288 Mos.	289+ Mos.	Total by Month
Jan-11	0.00%	0.00%	0.12%	0.00%	0.09%
Feb-11	0.00%	0.00%	0.00%	0.00%	0.00%
Mar-11	0.00%	0.00%	0.00%	0.00%	0.00%
Apr-11	0.00%	0.00%	0.00%	0.00%	0.00%
May-11	0.00%	0.00%	11.49%	3.49%	9.28%
Jun-11	1.04%	0.00%	0.00%	0.00%	0.06%
Jul-11	0.00%	0.00%	0.00%	0.00%	0.00%
Aug-11	0.00%	0.00%	0.00%	0.13%	0.03%
Sep-11	0.00%	0.00%	0.00%	0.00%	0.00%
Oct-11	0.00%	0.00%	0.00%	0.09%	0.02%
Nov-11	0.00%	0.00%	15.67%	0.00%	9.78%
Dec-11	0.00%	0.00%	0.00%	0.00%	0.00%
Jan-12	0.00%	0.00%	23.69%	0.00%	11.66%
Feb-12	0.00%	0.00%	0.00%	0.00%	0.00%
Mar-12	0.00%	0.00%	0.00%	0.00%	0.00%
Apr-12	0.00%	0.00%	0.00%	0.00%	0.00%
May-12	0.00%	0.00%	0.00%	0.00%	0.00%
Jun-12	0.00%	0.00%	0.01%	0.00%	0.00%
Jul-12	0.00%	0.00%	0.00%	0.00%	0.00%
Aug-12	0.00%	0.00%	0.17%	0.00%	0.04%
Sep-12	0.00%	0.05%	0.00%	0.00%	0.01%
Oct-12	0.00%	0.00%	0.00%	0.00%	0.00%
Nov-12	0.13%	0.00%	0.00%	0.00%	0.03%
Dec-12	0.00%	0.00%	0.00%	2.86%	1.03%
Total	0.03%	0.00%	2.13%	0.36%	0.96%

RESET TYPE	FIXED RATE	FHLB VARIOUS	PRIME RATE	5 YR LIBOR SWAP	3 MO LIBOR	5 YR CMT	Total by Month
Jan-11	0.16%	0.00%	0.00%	0.13%	0.00%	0.00%	0.09%
Feb-11	0.00%	0.00%	0.00%	0.00%	0.00%	0.00%	0.00%
Mar-11	0.00%	0.00%	0.00%	0.00%	0.00%	0.00%	0.00%
Apr-11	0.00%	0.00%	0.00%	0.00%	0.00%	0.00%	0.00%
May-11	34.52%	0.00%	0.00%	1.88%	0.00%	0.00%	9.28%
Jun-11	0.00%	0.00%	0.15%	0.00%	0.00%	0.00%	0.06%
Jul-11	0.00%	0.00%	0.00%	0.00%	0.00%	0.00%	0.00%
Aug-11	0.00%	0.00%	0.06%	0.00%	0.00%	0.00%	0.03%
Sep-11	0.00%	0.00%	0.00%	0.00%	0.00%	0.00%	0.00%
Oct-11	0.00%	0.00%	0.00%	0.06%	0.00%	0.00%	0.02%
Nov-11	0.00%	0.00%	0.00%	27.92%	0.00%	0.00%	9.78%
Dec-11	0.00%	0.00%	0.00%	0.00%	0.00%	0.00%	0.00%
Jan-12	0.00%	1.24%	21.92%	0.00%	0.00%	0.00%	11.66%
Feb-12	0.00%	0.00%	0.00%	0.00%	0.03%	0.00%	0.00%
Mar-12	0.00%	0.00%	0.00%	0.00%	0.03%	0.00%	0.00%
Apr-12	0.00%	0.00%	0.00%	0.00%	0.02%	0.00%	0.00%
May-12	0.00%	0.00%	0.00%	0.00%	0.00%	0.00%	0.00%
Jun-12	0.00%	0.00%	0.00%	0.00%	0.00%	0.00%	0.00%
Jul-12	0.00%	0.00%	0.00%	0.00%	0.00%	0.00%	0.00%
Aug-12	0.43%	0.00%	0.00%	0.00%	0.00%	0.00%	0.04%
Sep-12	0.00%	0.00%	0.00%	0.02%	0.00%	0.00%	0.01%
Oct-12	0.00%	0.00%	0.00%	0.00%	0.00%	0.00%	0.00%
Nov-12	0.00%	0.00%	0.00%	0.07%	0.00%	0.00%	0.03%
Dec-12	0.00%	0.00%	0.00%	2.85%	0.00%	0.00%	1.03%
Total	1.21%	0.07%	0.96%	1.12%	0.00%	0.00%	0.96%

FMLP Update

The dormant FMLP continues to impress, with a near 3 year CPR of less than 1%. Especially impressive is the ridiculously low speed since this February. For those who might be contemplating investing in 504 1st liens now that the program is ended, this history, based on nearly \$1 billion in securitized loans, is an excellent proxy for performance.

We will continue to track the performance of the program, as long as the data is available. With a new 504 CSA in place, it remains to be seen if the data will still be readily available in a few months. If so, please continue to visit this section and hopefully we will still have good news on the performance front.

Secondary Market Access

Secondary Market Access (SMA) is an Ohio-based corporation whose main goal is to provide secondary market solutions for 504 first mortgage lenders.

For more information about SMA, please contact either Bob Judge (bob.judge@glsolutions.us) or Jordan Blanchard (jblanchard@wholesale504.com).

DEBENTURE SPEEDS...CONTINUED

As we mentioned last month, we now see the typical prepayment phenomena that is associated with economic growth. Decreasing defaults along with rising voluntary prepayments have taken hold in the 504 program, much like they have in the sister 7a program.

For further information on the terminology and concepts used in this article, please refer to the "Glossary and Definitions" at the end of the report.

Expect more of the same as we head into 2013.

For the data and charts, please refer to the following 2 pages of the Report.

Data and Charts on the following pages



A Breakthrough Tool for Underwriters and SBA Investors

Finally a Web-based Loan Analytics Portal for 7(a) and 504 loan performance, accessible through a user friendly, searchable database.

7(a) default and prepayment data going back to 2000

504 default data going back to 1959.

Monthly subscribers will have access to customized searches using criteria such as:

- **Structural:** Reset Frequency, Guarantee Percentage, Interest Rate, Gross Margin, Maturity, Cohort Year, and Loan Size
- **Industry:** NAICS or SIC codes, SIC Major Groups, or SIC Division
- **Franchise:** Franchise Code or Franchise Name
- **Geography:** State, County, MSA and Urban versus Rural area.
- **Demographics:** County income as a Percentage of State or National income levels, Woman or Veteran owned business.

Armed with this information, users can refine their decision making process based on empirical data and in turn, enhance revenues and returns from their government guaranteed lending and investing activities.

For more information, please call Bob Judge at 216-456-2480 x133 or visit the website at: www.sbla.us

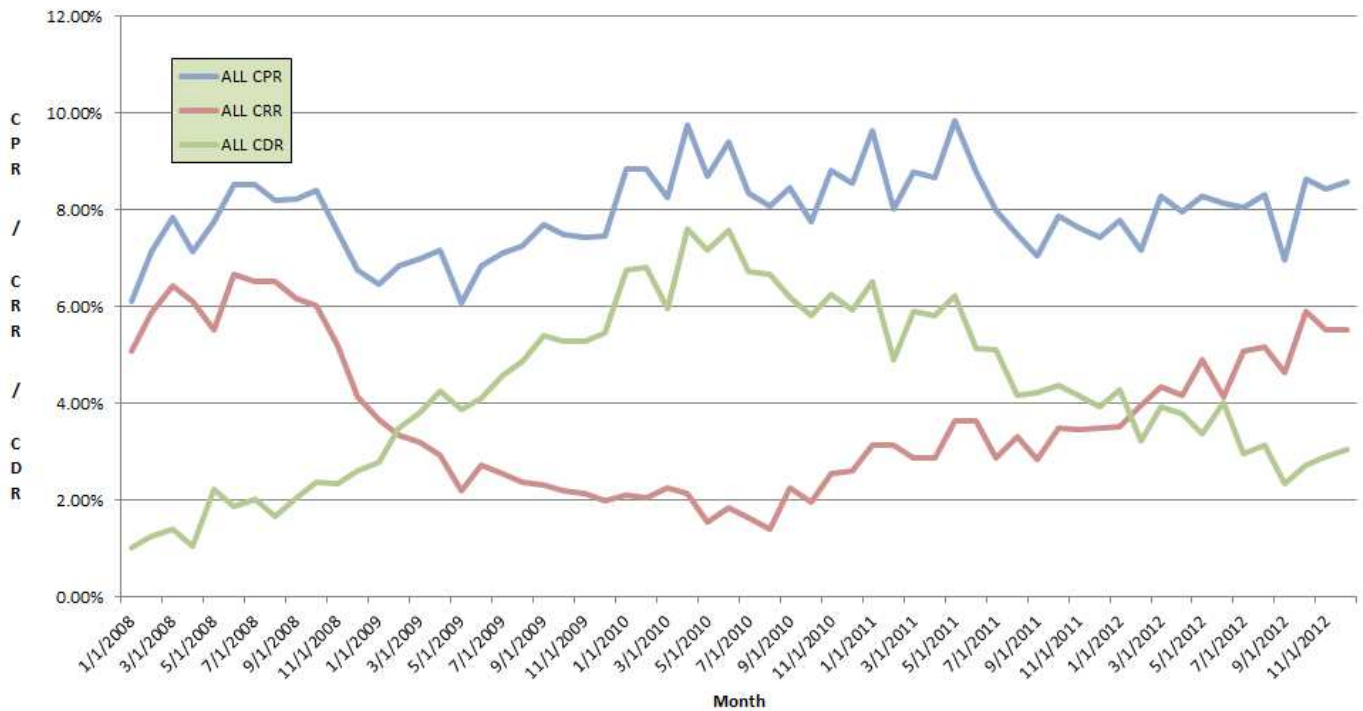
Subscribe at the website

504 DCPC PREPAY SPEEDS - LAST 5 YEARS

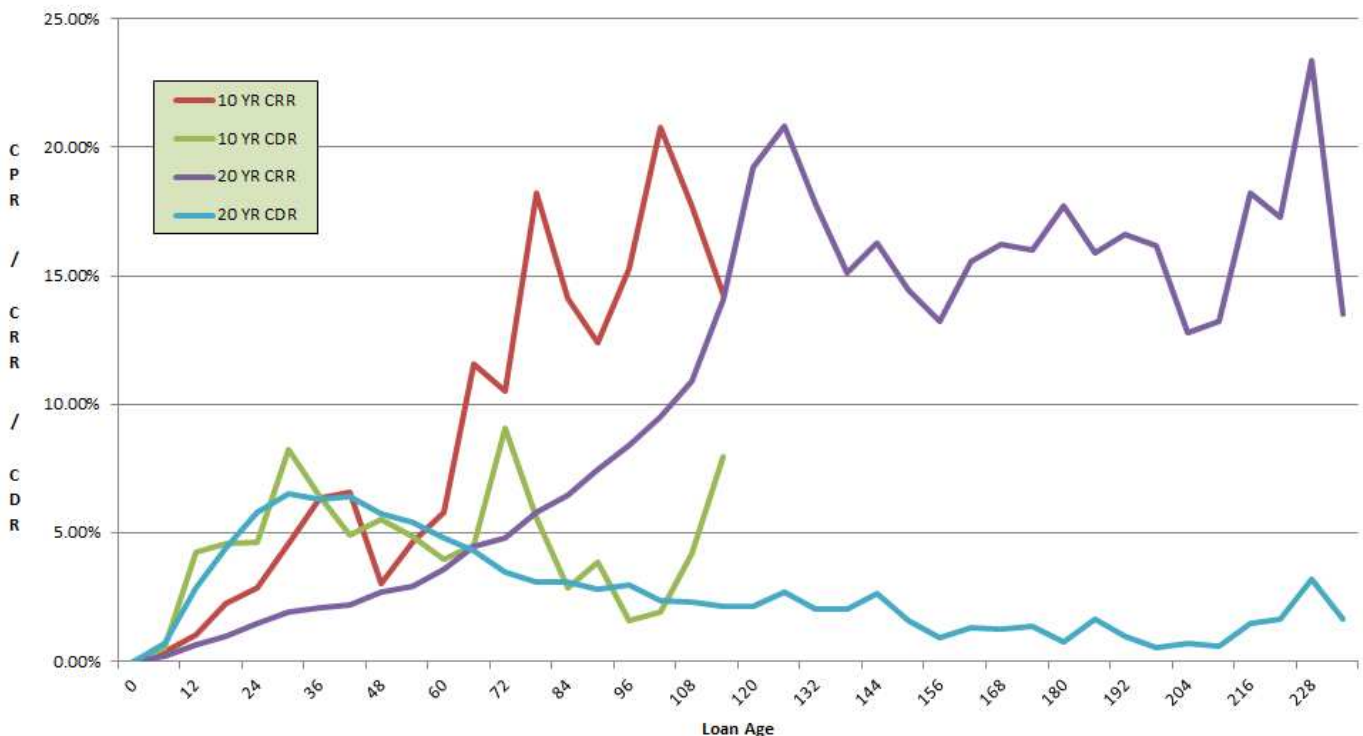
DATE	20 YR. CPR	20 YR. CRR	20 YR. CDR	10 YR. CPR	10 YR. CRR	10 YR. CDR	ALL CPR	ALL CRR	ALL CDR
1/1/2008	6.23%	5.19%	1.04%	2.72%	1.73%	0.99%	6.10%	5.07%	1.03%
2/1/2008	7.12%	5.87%	1.25%	NA	NA	NA	7.12%	5.87%	1.25%
3/1/2008	7.90%	6.50%	1.40%	6.43%	4.48%	1.95%	7.86%	6.44%	1.42%
4/1/2008	7.15%	6.10%	1.05%	NA	NA	NA	7.15%	6.10%	1.05%
5/1/2008	7.66%	5.51%	2.15%	10.57%	6.20%	4.37%	7.75%	5.53%	2.22%
6/1/2008	8.53%	6.65%	1.87%	NA	NA	NA	8.53%	6.65%	1.87%
7/1/2008	8.48%	6.52%	1.96%	9.55%	6.20%	3.35%	8.52%	6.50%	2.01%
8/1/2008	8.20%	6.52%	1.68%	NA	NA	NA	8.20%	6.52%	1.68%
9/1/2008	8.32%	6.23%	2.08%	5.43%	4.11%	1.32%	8.21%	6.16%	2.06%
10/1/2008	8.39%	6.03%	2.37%	NA	NA	NA	8.39%	6.03%	2.37%
11/1/2008	7.58%	5.26%	2.32%	6.31%	3.51%	2.80%	7.54%	5.20%	2.33%
12/1/2008	6.76%	4.15%	2.61%	NA	NA	NA	6.76%	4.15%	2.61%
1/1/2009	6.41%	3.72%	2.69%	8.08%	2.57%	5.50%	6.47%	3.68%	2.79%
2/1/2009	6.84%	3.35%	3.49%	NA	NA	NA	6.84%	3.35%	3.49%
3/1/2009	6.96%	3.15%	3.81%	7.80%	4.12%	3.68%	6.99%	3.18%	3.81%
4/1/2009	7.18%	2.93%	4.25%	NA	NA	NA	7.18%	2.93%	4.25%
5/1/2009	6.12%	2.24%	3.87%	5.07%	1.34%	3.73%	6.08%	2.21%	3.87%
6/1/2009	6.83%	2.73%	4.11%	NA	NA	NA	6.83%	2.73%	4.11%
7/1/2009	7.09%	2.62%	4.47%	7.71%	0.45%	7.26%	7.11%	2.54%	4.57%
8/1/2009	7.24%	2.37%	4.87%	NA	NA	NA	7.24%	2.37%	4.87%
9/1/2009	7.59%	2.34%	5.25%	10.52%	1.46%	9.07%	7.70%	2.31%	5.40%
10/1/2009	7.48%	2.21%	5.28%	NA	NA	NA	7.48%	2.21%	5.28%
11/1/2009	7.49%	2.16%	5.33%	5.41%	1.74%	3.67%	7.42%	2.15%	5.27%
12/1/2009	7.46%	1.99%	5.47%	NA	NA	NA	7.46%	1.99%	5.47%
1/1/2010	8.72%	2.09%	6.63%	12.44%	2.37%	10.07%	8.85%	2.10%	6.76%
2/1/2010	8.86%	2.05%	6.81%	NA	NA	NA	8.86%	2.05%	6.81%
3/1/2010	8.28%	2.24%	6.03%	7.24%	2.90%	4.35%	8.24%	2.27%	5.97%
4/1/2010	9.76%	2.15%	7.61%	NA	NA	NA	9.76%	2.15%	7.61%
5/1/2010	8.83%	1.56%	7.26%	4.98%	0.85%	4.12%	8.69%	1.54%	7.15%
6/1/2010	9.41%	1.84%	7.57%	NA	NA	NA	9.41%	1.84%	7.57%
7/1/2010	8.30%	1.58%	6.71%	9.73%	2.86%	6.87%	8.35%	1.63%	6.72%
8/1/2010	8.08%	1.42%	6.66%	NA	NA	NA	8.08%	1.42%	6.66%
9/1/2010	8.38%	2.22%	6.16%	10.61%	3.38%	7.23%	8.46%	2.27%	6.20%
10/1/2010	7.76%	1.95%	5.81%	NA	NA	NA	7.76%	1.95%	5.81%
11/1/2010	8.65%	2.43%	6.22%	13.45%	6.11%	7.34%	8.82%	2.56%	6.26%
12/1/2010	8.54%	2.61%	5.93%	NA	NA	NA	8.54%	2.61%	5.93%
1/1/2011	9.68%	3.10%	6.58%	8.76%	3.75%	5.02%	9.65%	3.12%	6.52%
2/1/2011	8.03%	3.14%	4.89%	NA	NA	NA	8.03%	3.14%	4.89%
3/1/2011	8.71%	2.77%	5.94%	10.61%	5.49%	5.13%	8.79%	2.88%	5.91%
4/1/2011	8.67%	2.87%	5.80%	NA	NA	NA	8.67%	2.87%	5.80%
5/1/2011	9.53%	3.37%	6.16%	17.64%	10.06%	7.58%	9.84%	3.63%	6.21%
6/1/2011	8.78%	3.65%	5.13%	NA	NA	NA	8.78%	3.65%	5.13%
7/1/2011	7.92%	2.87%	5.05%	9.69%	3.01%	6.68%	7.99%	2.87%	5.12%
8/1/2011	7.49%	3.31%	4.18%	NA	NA	NA	7.49%	3.31%	4.18%
9/1/2011	6.83%	2.76%	4.07%	12.27%	4.53%	7.74%	7.06%	2.83%	4.23%
10/1/2011	7.87%	3.50%	4.36%	NA	NA	NA	7.87%	3.50%	4.36%
11/1/2011	7.81%	3.52%	4.29%	3.07%	1.88%	1.19%	7.62%	3.46%	4.17%
12/1/2011	7.43%	3.50%	3.94%	NA	NA	NA	7.43%	3.50%	3.94%
1/1/2012	7.76%	3.48%	4.27%	8.39%	4.13%	4.25%	7.78%	3.51%	4.27%
2/1/2012	7.17%	3.95%	3.22%	NA	NA	NA	7.17%	3.95%	3.22%
3/1/2012	8.17%	4.23%	3.94%	10.74%	7.05%	3.69%	8.28%	4.35%	3.93%
4/1/2012	7.96%	4.17%	3.79%	NA	NA	NA	7.96%	4.17%	3.79%
5/1/2012	8.43%	4.95%	3.48%	4.96%	4.02%	0.94%	8.29%	4.91%	3.37%
6/1/2012	8.15%	4.13%	4.02%	NA	NA	NA	8.15%	4.13%	4.02%
7/1/2012	7.77%	4.82%	2.95%	14.04%	11.15%	2.89%	8.04%	5.09%	2.95%
8/1/2012	8.31%	5.18%	3.13%	NA	NA	NA	8.31%	5.18%	3.13%
9/1/2012	6.94%	4.61%	2.34%	7.35%	5.18%	2.17%	6.96%	4.63%	2.33%
10/1/2012	8.63%	5.89%	2.74%	NA	NA	NA	8.63%	5.89%	2.74%
11/1/2012	8.45%	5.49%	2.95%	7.80%	6.22%	1.58%	8.42%	5.53%	2.89%
12/1/2012	8.59%	5.53%	3.06%	NA	NA	NA	8.59%	5.53%	3.06%

504 DCPC Prepayment Speeds by 10 year, 20 year and All. Source: BONY

504 DCPC Prepayment Speeds by Month - Last 5 Years



504 DCPC Prepayment Speeds by Loan Age - Last 5 Years





Looking For Warehouse Funding For Your Inventory Of SBA Loans & Pools?

- For over 25 years, Mark A. Elste, CFA, President of Pennant Management, Inc., has arranged funding for SBA market makers, pool assemblers, and hedge funds.
- Let Pennant Management's extensive experience in the settlement of SBA 7(a) and USDA loans help your business today.

Contact:

MARK A. ELSTE, CFA

414.359.1446 melste@pennantmanagement.com



CHICAGO

NEW YORK

MILWAUKEE

TAMPA

11270 WEST PARK PLACE, SUITE 1025 • MILWAUKEE, WI 53224 • TEL (414) 359-1044 • FAX (414) 359-1008

www.pennantmanagement.com

PENNANT MANAGEMENT, INC., IS A SUBSIDIARY OF U.S. FIDUCIARY SERVICES, INC., AN EMPLOYEE-OWNED COMPANY.

BANKS

TIRED OF EARNING LOW
OVERNIGHT FED FUND
RATES ON YOUR DEPOSITS?

RISE UP

TO SUPERIOR FINANCIAL GROUP'S
SBA PARTNER PROGRAM

Superior Financial Group, a federally licensed
SBA Lender, is partnering with financial
institutions to produce and fund SBA Loans.

Benefits Include:

- No acquisition costs
- No marketing costs
- No broker fees
- No servicing hassles
- Earn higher interest rates
- Incubate main street
- Develop export businesses
- Participate in Patriot Express
- CRA Benefits
- Create new customers

Go to www.superiorfg.com/PartnerBanks or call
877.675.0500 to learn more about how you can tap
into Superior Financial Group's new prospect opportunity.



GLS 7(a) Settlement & Sales Strategies Tip #51 – Extreme Couponing?

No, I'm not talking about a new reality show on TLC. What I am referring to is simply that coupons do matter....now more than ever. This is particularly important with what I'll refer to as "cuspy" coupons (those where 25 bps make a large difference in the attractiveness of the loan to the secondary market).

The most "critical" point is between 1.75% and 2.00% gross margins where that 25bps may mean leaving a point or more of premium on the table. Ironically, we've seen some compression in pricing going the other way. By this I simply mean that there is currently less of a pricing differential for each 25bps change in coupon for those deals with gross margins over 2.00%.

Scott Evans is a partner at GLS. Mr. Evans has over 20 years of trading experience and has been involved in the SBA secondary markets for the last eight of those years. Mr. Evans has bought, sold, settled, and securitized nearly 20,000 SBA loans and now brings some of that expertise to the **CPR Report** in a recurring article called **Sale and Settlement Tip of the Month**. The article will focus on pragmatic tips aimed at helping lenders develop a more consistent sale and settlement process and ultimately deliver them the best execution possible.



nCino's Bank Operating System is a comprehensive solution created by bankers, for banks, to drive **increased profitability, productivity gains, regulatory compliance, and operating transparency** at all organizational levels and across all lines of business.

Typical
Bank
Report
(Old)

Pmp Cust Number	Pmp Cust Zip Code	Note Officer Name	Note Account Number	Note Bank Share Ledger Balance
12414	28443	MICHAEL SETZER	000010000174	2,360.59
2662	28403	KEVIN HUDSON	000010000333	0.00
24885	28403	MICHAEL SETZER	000010000092	21,541.39
26062	28480	MICHAEL SETZER	000010001098	0.00
26121	28443	MICHAEL SETZER	000010001016	909.07
2629	28411	KEVIN HUDSON	000010002165	0.00
3514	28412	KEVIN HUDSON	000010002722	1,960.26
24863	28405	MICHAEL SETZER	000010003322	3,756.01
16496	28480	DAVID BARLOW	000010003331	0.00
22806	28405	ASHLEY MIRANDA	000010004496	436.27
22806	28405	ASHLEY MIRANDA	000010007795	436.55
24322	28403	KEVIN HUDSON	000010008894	454.10
16456	28403	DAVID BARLOW	000010009375	0.00
13322	28480	DAVID BARLOW	000010010165	0.00
13320	28480	DAVID BARLOW	000010010439	0.00
2680	28403	KEVIN HUDSON	000010013041	0.00



nCino Bank
Operating
Dashboard
(New)

- A 19% **Increase** in Loan Volume
- 34% **Reductions** in Loan Closing Time
- Enhanced Focus on **Revenue Generating Activities**

- 22% **Increases** in Staff Efficiency
- Complete Operating **Transparency**
- 17% **Reductions** in Operating Costs
- **Eliminate** Exam Preparation Time

Learn more at www.ncino.com and schedule a Demo by calling 800.676.2466

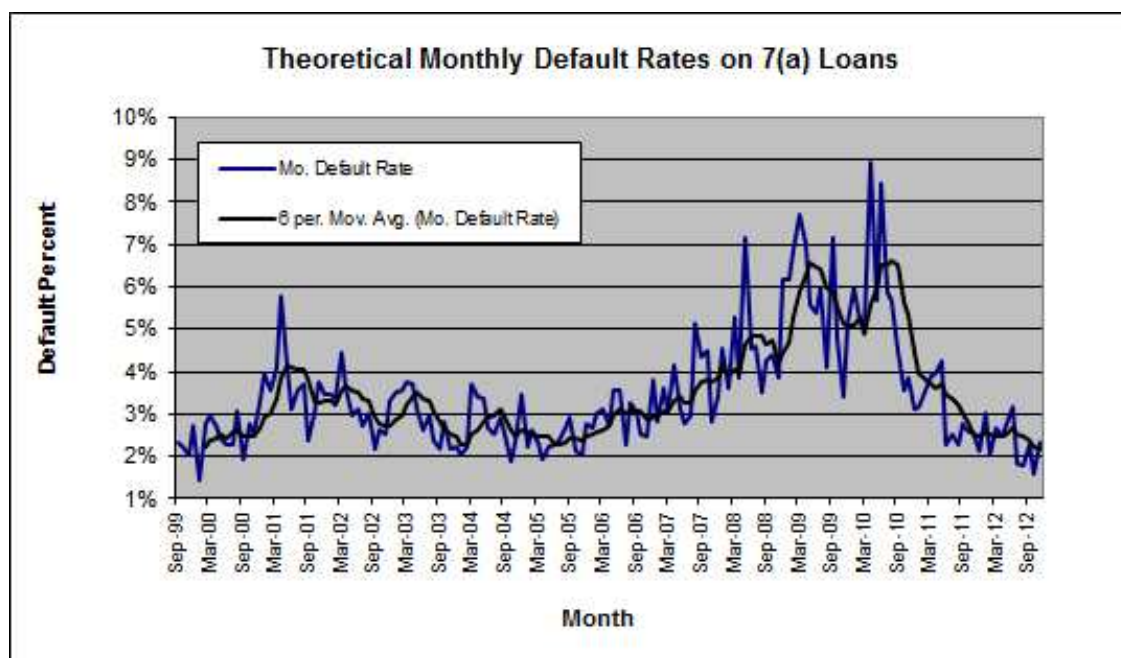
DEFAULT RATE MOVES BACK ABOVE 2%

In November, the theoretical default rate rose by 48% to 2.33% from a 12-year low of 1.58%.

While a 48% increase is never welcome, the fact that two of the previous three months set 12-year record lows does cushion the blow.

This month does not change our view that the 7a program is in a cyclical low for defaults that will likely keep overall prepayments low for years to come. If defaults can be this low in a low growth economy, what would they look like if we ever move back to a 3-4% growth rate in the US?

Maybe, one of these days, we will find out.



For further information on the terminology and concepts used in this article, please refer to the "Glossary and Definitions" at the end of the report.

DEFAULT-CURTAILMENT RATIOS

In our Default-Curtailment Ratios (DCR) we witnessed single-digit increases in both the 504 and the 7(a) ratios last month.

Please note that an increase in the DCR does not necessarily mean that the default rate is rising, only that the percentage of early curtailments attributable to defaults has increased.

SBA 7(a) Default Ratios

Last month, the 7(a) DCR rose back above 35% and has stayed below 40% for the past five months. Overall, the ratio increased by 6% to 36.17% from 34.07%.

This month, both defaults and voluntary prepayments rose. Since defaults increased by a greater degree than voluntaries, the ratio moved higher.

Turning to actual dollar amounts, defaults increased by 49% to \$78 million from \$53 million. As for voluntary prepayments, they rose by 36% to \$138 million versus \$102 million.

SBA 504 Default Ratios

The 504 DCR jumped back up a bit after hitting a four-year low last month. With voluntaries rising by a lower percentage than defaults, the ratio increased.

Specifically, the dollar amount of defaults increased by \$12 million to \$66 million (+22%). As for voluntary prepayments, they rose by \$15 million to \$135 million (+12%).

Summary

Both ratios seem to be consolidating in the mid 30s, with the expectation of a move into the 20s sometime in 2013.

For further information on the terminology and concepts used in this article, please refer to the "Glossary and Definitions" at the end of the report.

Graph on page 21

GLS VALUE INDICES MIXED

In October, the GLS Value Indices came in mixed, with three out of six sub-indices increasing and the other three decreasing.

The Base Rate / Libor spread rose by another 4 basis points to +2.95%. As for the prepayment element, CPRs were slightly lower in five out of six sub-indices.

By the end of October, the secondary market moved higher by another .125% to .25% as we approached 118 for fully priced, long loans.

Turning to the specifics, the largest increase was seen in the GLS VI-2, which rose by 15% to 46 basis points. The other increases, by order of magnitude, were: VI-5 (+7% to 167) and VI-6 (+4% to 177).

Decreases were seen, also by order of magnitude, in VI-1 (-60% to 37), VI-4 (-27% to 103) and VI-3 (-5% to 65).

Expect continued increases in pricing over the months to come, due to continued

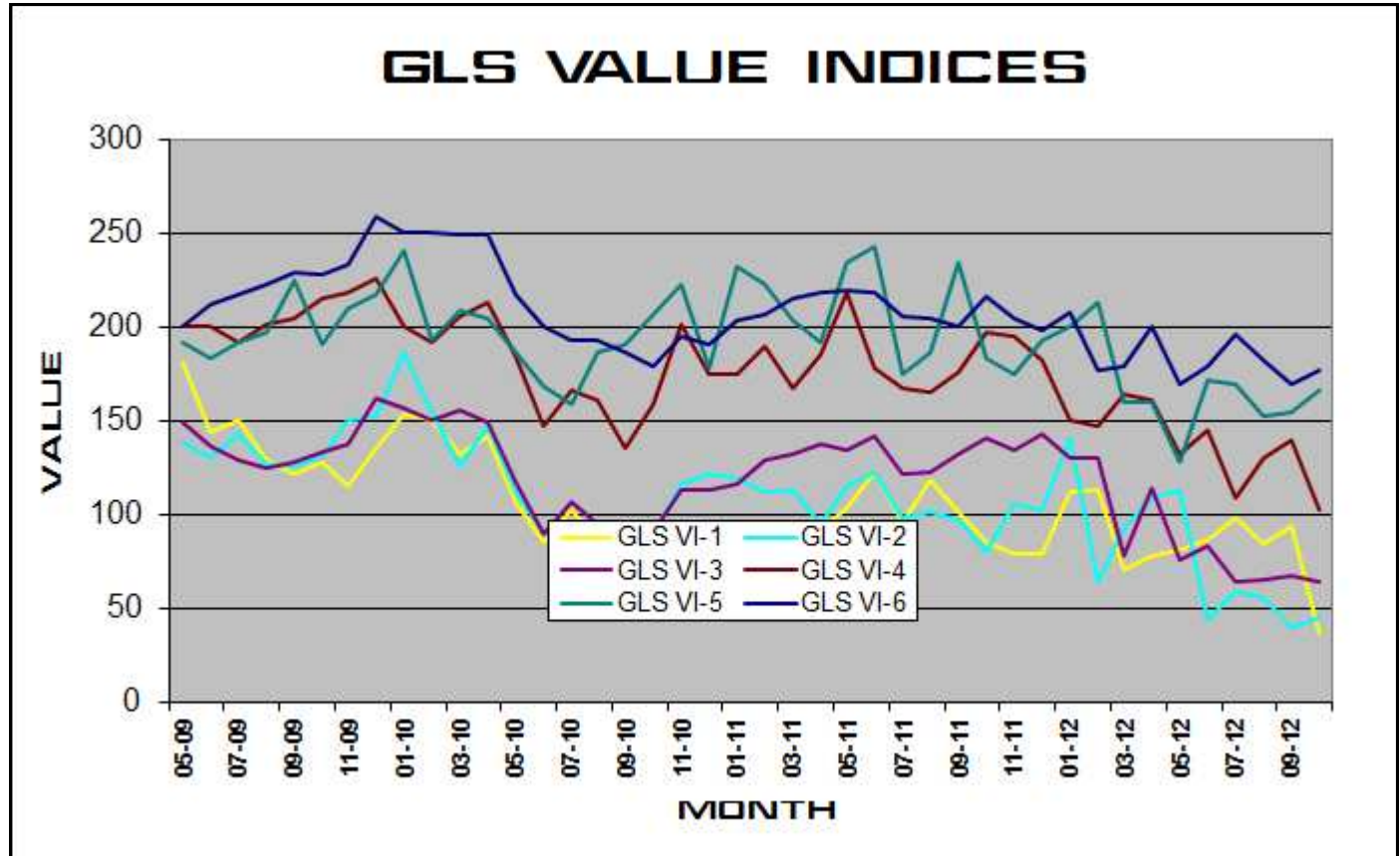
strong demand from investors and the low prepayment environment.

For further information on the terminology and concepts used in this article, please refer to the "Glossary and Definitions" at the end of the report.

Data on pages 16-17, Graph below

7(a) Secondary Market Pricing Grid: October 2012

Maturity	Gross Margin	Net Margin	Servicing	This Month Price	Last Month Price	3-Mos. Ago Price	6-Mos. Ago Price	1-Yr. Ago Price
10 yrs.	2.75%	1.075%	1.00%	114.50	114.25	113.50	111.625	111.40
15 yrs.	2.75%	1.075%	1.00%	115.25	114.875	113.625	112.50	112.25
20 yrs.	2.75%	1.075%	1.00%	117.50	117.25	116.00	114.125	114.00
25 yrs.	2.75%	1.075%	1.00%	117.95	117.875	116.50	115.00	114.50



GLS VALUE INDICES: SUPPORTING DATA

Table 1:

MONTH	BUCKET 1 CPR	BUCKET 2 CPR	BUCKET 3 CPR	BUCKET 4 CPR	BUCKET 5 CPR	BUCKET 6 CPR
May-09	13.12%	11.85%	11.79%	8.68%	9.92%	7.98%
Jun-09	13.18%	11.85%	12.35%	8.57%	8.73%	8.02%
Jul-09	12.40%	12.00%	12.51%	8.56%	8.23%	7.36%
Aug-09	13.34%	12.49%	12.36%	8.01%	7.34%	7.21%
Sep-09	12.74%	11.01%	11.83%	7.48%	6.70%	6.89%
Oct-09	12.45%	11.03%	11.31%	7.25%	7.85%	6.79%
Nov-09	12.11%	10.89%	11.01%	6.96%	7.13%	6.32%
Dec-09	11.33%	11.20%	10.55%	7.09%	7.80%	5.75%
Jan-10	11.16%	10.69%	10.30%	6.99%	8.00%	5.75%
Feb-10	10.05%	9.97%	10.00%	7.33%	8.84%	5.71%
Mar-10	9.90%	10.73%	10.07%	7.12%	8.75%	5.75%
Apr-10	9.96%	10.45%	9.72%	7.34%	8.12%	5.32%
May-10	10.56%	11.09%	10.28%	7.88%	8.53%	5.86%
Jun-10	10.94%	11.18%	10.41%	7.83%	8.53%	6.38%
Jul-10	10.32%	11.15%	10.57%	7.13%	8.59%	7.48%
Aug-10	10.45%	11.02%	10.16%	7.38%	8.25%	7.60%
Sep-10	11.29%	10.76%	10.54%	7.48%	8.01%	7.70%
Oct-10	11.35%	10.06%	10.28%	7.27%	7.29%	7.84%
Nov-10	10.55%	9.24%	8.82%	7.05%	6.45%	7.21%
Dec-10	10.89%	8.48%	8.45%	7.30%	5.61%	7.11%
Jan-11	11.99%	8.87%	7.84%	7.49%	5.03%	5.96%
Feb-11	11.22%	9.01%	7.57%	7.22%	4.91%	5.53%
Mar-11	10.43%	8.86%	7.07%	7.20%	5.13%	5.37%
Apr-11	10.60%	9.69%	7.38%	6.90%	4.95%	5.17%
May-11	10.82%	9.75%	7.26%	6.11%	5.51%	5.45%
Jun-11	10.25%	9.69%	6.81%	5.39%	5.70%	5.12%
Jul-11	10.02%	9.51%	6.38%	4.94%	6.11%	5.12%
Aug-11	10.25%	8.86%	6.16%	5.14%	6.04%	4.88%
Sep-11	10.23%	9.18%	6.13%	5.00%	5.15%	4.69%
Oct-11	10.29%	8.59%	5.53%	4.77%	5.77%	4.57%
Nov-11	9.94%	8.22%	5.59%	4.85%	5.75%	4.20%
Dec-11	9.74%	7.83%	5.62%	4.78%	5.59%	4.12%
Jan-12	9.00%	8.29%	6.20%	5.23%	5.04%	4.15%
Feb-12	9.17%	9.19%	6.18%	5.11%	4.64%	4.35%
Mar-12	8.53%	8.57%	6.34%	5.16%	5.14%	4.30%
Apr-12	8.52%	8.55%	6.18%	5.46%	4.65%	4.20%
May-12	10.19%	8.24%	6.31%	6.03%	4.86%	4.28%
Jun-12	10.42%	9.19%	6.72%	6.54%	4.93%	4.58%
Jul-12	10.78%	8.90%	6.50%	6.63%	5.55%	4.40%
Aug-12	11.30%	8.23%	6.67%	7.18%	5.97%	4.40%
Sep-12	12.35%	8.72%	6.85%	6.90%	6.46%	4.44%
Oct-12	11.44%	8.16%	7.16%	6.52%	6.34%	4.40%

Rolling six-month CPR speeds for all maturity buckets. Source: Colson Services

GLS VALUE INDICES: HISTORICAL VALUES

Table 2:

MONTH	WAVG LIBOR	WAVG BASE	BASE LIBOR SPD	GLS VI-1	GLS VI-2	GLS VI-3	GLS VI-4	GLS VI-5	GLS VI-6	INDICES LEGEND	
May-09	0.70%	3.26%	2.57%	182.1	138.7	149.6	200.3	192.4	200.8		
Jun-09	0.55%	3.25%	2.70%	144.8	130.3	137.3	200.2	183.8	212.8		
Jul-09	0.48%	3.25%	2.77%	150.9	143.8	129.1	191.9	192.4	217.4		
Aug-09	0.39%	3.25%	2.86%	129.7	127.4	125.7	201.7	197.3	222.8		
Sep-09	0.29%	3.25%	2.96%	122.0	126.5	128.3	205.5	225.3	229.6		
Oct-09	0.26%	3.25%	2.99%	128.2	131.3	133.9	216.0	191.2	228.8		
Nov-09	0.26%	3.25%	2.99%	115.3	150.9	138.0	219.2	210.8	234.2		
Dec-09	0.25%	3.25%	3.00%	136.1	153.4	162.0	226.3	218.0	259.6		
Jan-10	0.25%	3.24%	2.99%	153.9	186.5	157.2	201.0	240.6	250.7		
Feb-10	0.25%	3.23%	2.99%	150.8	155.1	150.4	192.3	193.0	250.7		
Mar-10	0.26%	3.25%	2.99%	133.1	126.0	155.8	206.4	209.5	249.2		
Apr-10	0.29%	3.25%	2.96%	142.1	147.5	149.3	213.6	205.1	250.0		
May-10	0.41%	3.25%	2.84%	107.5	112.1	117.5	184.4	187.2	218.1		
Jun-10	0.52%	3.25%	2.73%	85.9	90.9	90.1	147.5	168.7	200.4		
Jul-10	0.46%	3.26%	2.80%	102.7	81.0	106.7	167.0	159.5	193.5		
Aug-10	0.33%	3.26%	2.93%	85.6	91.6	95.4	161.6	186.6	193.2		
Sep-10	0.28%	3.25%	2.97%	74.1	95.3	94.0	135.6	190.8	187.2		
Oct-10	0.28%	3.25%	2.97%	79.8	89.7	91.3	159.8	207.2	179.5		
Nov-10	0.27%	3.25%	2.98%	70.5	117.2	113.5	202.0	223.5	195.4		
Dec-10	0.29%	3.25%	2.96%	79.7	121.8	113.3	175.5	178.1	191.3		
Jan-11	0.29%	3.25%	2.96%	77.0	119.8	117.3	175.2	232.3	203.7		
Feb-11	0.29%	3.25%	2.96%	88.9	112.9	129.8	190.4	222.9	207.6		
Mar-11	0.30%	3.25%	2.95%	96.8	113.5	132.3	167.8	203.4	216.0		
Apr-11	0.27%	3.25%	2.98%	92.5	95.9	137.6	186.2	192.5	218.8		
May-11	0.24%	3.25%	3.01%	104.3	116.1	134.3	219.2	235.1	220.2		
Jun-11	0.23%	3.24%	3.01%	123.1	123.0	141.8	178.1	243.7	218.4		
Jul-11	0.24%	3.25%	3.01%	96.8	98.4	121.7	167.9	175.4	206.5		
Aug-11	0.27%	3.24%	2.97%	118.6	101.5	122.8	165.8	186.4	205.3		
Sep-11	0.32%	3.25%	2.93%	101.6	98.0	132.7	176.2	234.9	200.5		
Oct-11	0.34%	3.24%	2.90%	85.5	80.8	141.1	197.4	183.4	216.3		
Nov-11	0.41%	3.25%	2.84%	79.1	106.3	134.9	195.8	175.2	204.9		
Dec-11	0.50%	3.25%	2.75%	79.6	103.0	143.8	182.6	193.6	198.5		
Jan-12	0.44%	3.25%	2.81%	112.1	141.1	130.7	151.0	201.1	208.5		
Feb-12	0.41%	3.25%	2.84%	113.5	65.0	130.5	148.1	214.0	177.6		
Mar-12	0.44%	3.25%	2.81%	71.5	93.3	78.5	164.3	160.2	179.3		
Apr-12	0.42%	3.25%	2.83%	78.7	109.6	114.6	161.0	160.2	200.8		
May-12	0.43%	3.24%	2.81%	81.3	113.4	76.4	132.5	128.0	169.8		
Jun-12	0.41%	3.23%	2.83%	87.1	44.0	83.7	145.5	172.0	179.8		
Jul-12	0.39%	3.25%	2.86%	98.4	59.0	65.0	109.0	169.6	196.7		
Aug-12	0.36%	3.25%	2.89%	85.4	56.2	65.8	130.4	152.5	182.2		
Sep-12	0.33%	3.25%	2.91%	93.9	40.0	68.1	140.7	155.1	169.7		
Oct-12	0.30%	3.25%	2.95%	37.4	46.0	64.8	102.8	166.5	177.2		

GLS VI values for all maturity buckets for last 42 months.

YTD PREPAYMENT SPEEDS

Table 3:

CPR/MO.	<8	8 - 10	10 - 13	13 - 16	16 - 20	20+	ALL
Jan-12	8.58%	10.72%	7.83%	6.85%	2.98%	5.37%	6.20%
Feb-12	8.34%	11.36%	5.10%	6.11%	3.07%	4.85%	5.23%
Mar-12	6.22%	5.31%	8.24%	5.16%	5.91%	3.98%	5.28%
Apr-12	12.23%	8.27%	4.76%	6.21%	4.98%	3.87%	4.61%
May-12	17.10%	7.97%	6.73%	8.11%	7.40%	4.25%	5.62%
Jun-12	9.68%	11.23%	7.59%	6.81%	5.06%	5.18%	6.16%
Jul-12	10.75%	9.06%	6.52%	7.46%	6.76%	4.25%	5.39%
Aug-12	11.50%	7.44%	6.11%	9.48%	5.66%	4.82%	5.60%
Sep-12	12.62%	8.38%	9.24%	3.17%	8.79%	4.23%	5.99%
Oct-12	6.50%	4.82%	6.68%	3.76%	4.28%	3.67%	4.52%
Nov-12	16.56%	8.25%	6.72%	6.03%	6.50%	5.56%	6.24%
Grand Total	10.97%	8.47%	6.88%	6.32%	5.61%	4.55%	5.54%

2012 monthly prepayment speeds broken out by maturity sector. Source: Colson Services

Table 4:

POOL AGE	<8	8 - 10	10 - 13	13 - 16	16 - 20	20+	ALL
Jan-12	25 Mos.	35 Mos.	34 Mos.	65 Mos.	48 Mos.	49 Mos.	45 Mos.
Feb-12	25 Mos.	36 Mos.	34 Mos.	66 Mos.	48 Mos.	49 Mos.	45 Mos.
Mar-12	25 Mos.	37 Mos.	34 Mos.	67 Mos.	48 Mos.	49 Mos.	45 Mos.
Apr-12	26 Mos.	37 Mos.	35 Mos.	67 Mos.	49 Mos.	49 Mos.	45 Mos.
May-12	26 Mos.	36 Mos.	34 Mos.	68 Mos.	48 Mos.	49 Mos.	45 Mos.
Jun-12	26 Mos.	36 Mos.	35 Mos.	69 Mos.	49 Mos.	48 Mos.	45 Mos.
Jul-12	26 Mos.	35 Mos.	35 Mos.	68 Mos.	48 Mos.	48 Mos.	45 Mos.
Aug-12	26 Mos.	35 Mos.	35 Mos.	69 Mos.	48 Mos.	49 Mos.	45 Mos.
Sep-12	26 Mos.	35 Mos.	35 Mos.	68 Mos.	49 Mos.	48 Mos.	45 Mos.
Oct-12	27 Mos.	36 Mos.	36 Mos.	69 Mos.	49 Mos.	49 Mos.	45 Mos.
Nov-12	27 Mos.	36 Mos.	36 Mos.	68 Mos.	50 Mos.	49 Mos.	45 Mos.

2012 pool age broken out by maturity sector. Source: Colson Services

YEAR-TO-DATE CPR DATA

Table 5:

< 8 BY AGE	0-12 Mos.	13-24 Mos.	25-36 Mos.	37-48 Mos.	48+ Mos.
Jan-12	4.61%	10.56%	11.52%	8.08%	9.00%
Feb-12	0.62%	8.06%	18.49%	9.44%	9.94%
Mar-12	6.41%	7.45%	5.74%	3.48%	5.81%
Apr-12	6.62%	10.67%	23.99%	6.82%	12.01%
May-12	28.92%	16.66%	8.73%	3.58%	14.15%
Jun-12	0.88%	16.05%	8.50%	6.76%	17.59%
Jul-12	16.34%	9.46%	5.95%	7.86%	10.74%
Aug-12	12.91%	8.90%	12.84%	6.25%	13.54%
Sep-12	9.40%	14.17%	12.62%	6.88%	19.12%
Oct-12	4.53%	8.39%	6.86%	3.96%	8.42%
Nov-12	33.66%	11.49%	7.92%	4.41%	12.50%
Grand Total	0.31%	0.36%	1.14%	0.55%	1.07%

10-13 BY AGE	0-12 Mos.	13-24 Mos.	25-36 Mos.	37-48 Mos.	48+ Mos.
Jan-12	4.98%	13.62%	11.17%	8.87%	4.67%
Feb-12	2.23%	8.94%	8.43%	5.94%	3.39%
Mar-12	13.56%	5.97%	8.58%	9.41%	4.63%
Apr-12	2.39%	3.07%	8.48%	4.01%	6.43%
May-12	1.38%	11.76%	10.66%	8.24%	5.67%
Jun-12	7.21%	11.80%	7.84%	6.17%	5.42%
Jul-12	3.00%	10.42%	10.85%	6.63%	4.93%
Aug-12	5.71%	5.60%	11.13%	7.19%	4.45%
Sep-12	5.72%	12.89%	12.13%	5.57%	8.77%
Oct-12	1.90%	11.93%	8.60%	5.19%	5.75%
Nov-12	2.99%	8.40%	11.74%	7.16%	5.78%
Grand Total	4.27%	17.00%	9.68%	7.45%	4.75%

16-20 BY AGE	0-12 Mos.	13-24 Mos.	25-36 Mos.	37-48 Mos.	48+ Mos.
Jan-12	0.00%	0.00%	10.01%	0.83%	3.98%
Feb-12	1.78%	0.33%	0.00%	0.54%	5.52%
Mar-12	0.00%	0.00%	10.43%	19.56%	6.01%
Apr-12	4.43%	6.18%	14.80%	0.00%	3.42%
May-12	2.10%	9.62%	9.97%	12.97%	6.81%
Jun-12	0.00%	0.00%	9.03%	8.84%	6.91%
Jul-12	0.00%	12.88%	19.54%	0.00%	4.88%
Aug-12	2.30%	4.67%	20.20%	6.42%	4.09%
Sep-12	4.48%	9.77%	12.28%	19.43%	7.48%
Oct-12	2.42%	0.00%	9.74%	16.26%	3.57%
Nov-12	0.00%	9.88%	4.36%	15.32%	5.79%
Grand Total	0.00%	0.00%	2.09%	4.26%	3.71%

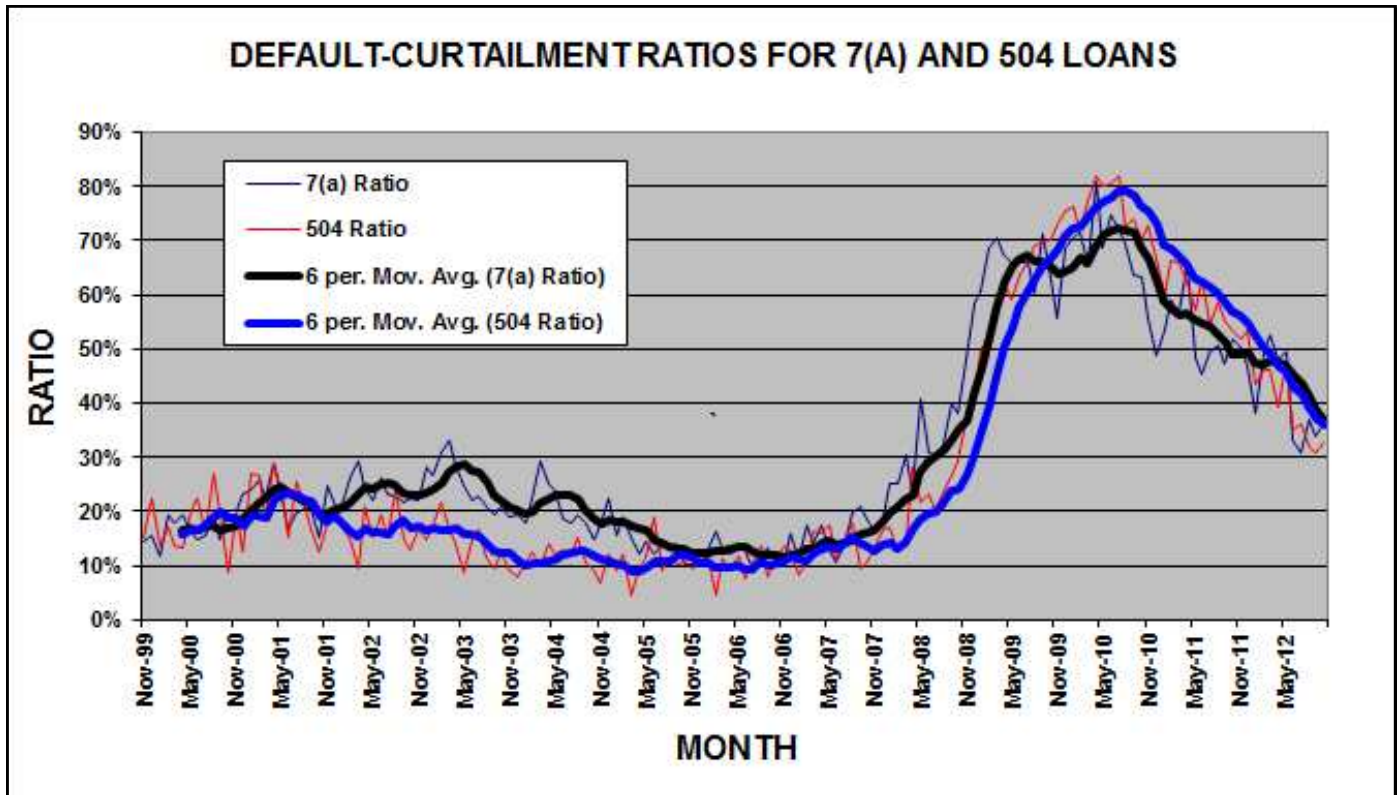
YEAR-TO-DATE CPR DATA

Table 5:

8-10 BY AGE	0-12 Mos.	13-24 Mos.	25-36 Mos.	37-48 Mos.	48+ Mos.
Jan-12	5.92%	18.80%	12.03%	6.23%	8.78%
Feb-12	2.64%	15.16%	17.87%	8.30%	7.31%
Mar-12	2.89%	8.57%	5.56%	3.42%	4.94%
Apr-12	10.49%	1.45%	15.15%	6.87%	5.71%
May-12	0.23%	10.39%	12.68%	7.19%	6.40%
Jun-12	1.55%	14.98%	14.97%	16.50%	7.61%
Jul-12	1.82%	13.74%	13.50%	11.02%	6.56%
Aug-12	9.07%	11.62%	6.54%	2.75%	7.73%
Sep-12	10.45%	4.68%	6.49%	10.64%	8.10%
Oct-12	2.89%	7.67%	8.80%	1.35%	4.53%
Nov-12	5.60%	15.40%	11.76%	2.41%	7.66%
Grand Total	2.16%	16.72%	7.69%	6.11%	4.82%

13-16 BY AGE	0-12 Mos.	13-24 Mos.	25-36 Mos.	37-48 Mos.	48+ Mos.
Jan-12	10.25%	0.00%	22.29%	0.00%	5.87%
Feb-12	8.14%	20.32%	0.00%	0.00%	4.64%
Mar-12	0.00%	6.22%	4.96%	7.71%	5.84%
Apr-12	3.16%	12.59%	6.20%	42.15%	4.25%
May-12	0.00%	8.07%	36.75%	0.00%	4.63%
Jun-12	0.00%	0.00%	21.04%	0.00%	6.89%
Jul-12	0.00%	10.73%	13.65%	20.32%	6.85%
Aug-12	23.84%	5.27%	34.77%	0.00%	4.36%
Sep-12	0.00%	5.17%	6.57%	0.00%	2.88%
Oct-12	0.00%	6.72%	1.12%	0.00%	4.14%
Nov-12	0.00%	23.20%	0.00%	0.00%	3.62%
Grand Total	0.00%	7.21%	1.92%	2.96%	6.71%

20+ BY AGE	0-12 Mos.	13-24 Mos.	25-36 Mos.	37-48 Mos.	48+ Mos.
Jan-12	3.34%	5.45%	10.66%	7.13%	4.76%
Feb-12	3.49%	5.92%	5.67%	7.27%	4.68%
Mar-12	1.77%	5.65%	5.18%	5.46%	4.04%
Apr-12	0.02%	3.88%	4.72%	6.94%	4.95%
May-12	0.96%	6.24%	4.07%	7.02%	4.66%
Jun-12	0.04%	2.93%	8.80%	9.29%	6.78%
Jul-12	1.79%	2.69%	5.74%	6.24%	5.32%
Aug-12	3.92%	2.99%	6.70%	7.59%	5.06%
Sep-12	1.75%	4.43%	2.09%	8.55%	5.29%
Oct-12	1.08%	1.86%	7.74%	4.39%	4.31%
Nov-12	1.72%	5.35%	8.89%	8.99%	5.80%
Grand Total	0.37%	1.69%	10.28%	7.35%	5.24%



GOVERNMENT LOAN SOLUTIONS

The nationwide leader in the valuation of SBA and USDA assets.

GLS provides valuations for:

- SBA 7(a), 504 1st mortgage and USDA servicing rights
- SBA 7(a) and 504 1st mortgage pools
- Guaranteed and non-guaranteed 7(a) loan portions Interest-only portions of SBA and USDA loans

In these times of market uncertainty, let GLS help you in determining the value of your SBA and USDA related-assets.

For further information, please contact Bob Judge at (216) 456-2480 ext. 133 or at bob.judge@gl solutions.us

GLOSSARY AND DEFINITIONS: PAGE 1

Default-Curtailment Ratio

The Default-Curtailment Ratio (DCR), or the percentage of secondary loan curtailments that are attributable to defaults, can be considered a measurement of the health of small business in the U.S. GLS, with default and borrower prepayment data supplied by Colson Services, has calculated DCRs for both SBA 7(a) and 504 loans since January, 2000.

The default ratio is calculated using the following formula:

$$\text{Defaults} / (\text{Defaults} + \text{Prepayments})$$

By definition, when the DCR is increasing, defaults are increasing faster than borrower prepayments, suggesting a difficult business environment for small business, perhaps even recessionary conditions. On the flip side, when the DCR is decreasing, either defaults are falling or borrower prepayments are outpacing defaults, each suggesting improving business conditions for small business.

Our research suggests that a reading of 20% or greater on 7(a) DCRs and 15% or greater on 504 DCRs suggest economic weakness in these small business borrower groups.

Theoretical Default Rate

Due to a lack of up-to-date default data, we attempt to estimate the current default rate utilizing two datasets that we track:

1. Total prepayment data on all SBA pools going back to 2003. This is the basis for our monthly prepayment information.

Total prepayment data on all secondary market 7(a) loans going back to 1999, broken down by defaults and voluntary prepayments. This is the basis for our monthly default ratio analysis.

With these two datasets, it is possible to derive a theoretical default rate on SBA 7(a) loans. We say "theoretical" because the reader has to accept the following assumptions as true:

1. The ratio of defaults to total prepayments is approximately the same for SBA 7(a) pools and secondary market 7(a) loans.

Fact: 60% to 70% of all secondary market 7(a) loans are inside SBA pools.

2. The default rate for secondary market 7(a) loans closely approximates the default rate for all outstanding 7(a) loans.

Fact: 25% to 35% of all outstanding 7(a) loans have been sold into the secondary market.

While the above assumptions seem valid, there exists some unknown margin for error in the resulting analysis. However, that does not invalidate the potential value of the information to the SBA lender community.

The Process

To begin, we calculated total SBA pool prepayments, as a percentage of total secondary loan prepayments, using the following formula:

$$\text{Pool Prepay Percentage} = \text{Pool Prepayments} / \text{Secondary Loan Prepayments}$$

This tells us the percentage of prepayments that are coming from loans that have been pooled. Next, we calculated the theoretical default rate using the following equation:

$$((\text{Secondary Loan Defaults} * \text{Pool Prepay Percentage}) / \text{Pool Opening Balance}) * 12$$

This provides us with the theoretical default rate for SBA 7(a) loans, expressed as an annualized percentage.

GLS Long Value Indices

Utilizing the same maturity buckets as in our CPR analysis, we calculate 6 separate indexes, denoted as GLS VI-1 to VI-6. The numbers equate to our maturity buckets in increasing order, with VI-1 as <8 years, VI-2 as 8-10 years, VI-3 as 10-13 years, VI-4 as 13-16 years, VI-5 as 16-20 years and ending with VI-6 as 20+ years.

The new Indices are basically weighted-average spreads to Libor, using the rolling six-month CPR for pools in the same maturity bucket, at the time of the transaction. While lifetime prepayment speeds would likely be lower for new loans entering the secondary market, utilizing six-month rolling pool speeds allowed us to make relative value judgments across different time periods.

We compare the bond-equivalent yields to the relevant Libor rate at the time of the transaction. We then break the transactions into the six different maturity buckets and calculate the average Libor spread, weighting them by the loan size.

For these indices, the value can be viewed as the average spread to Libor, with a higher number equating to greater value in the trading levels of SBA 7(a) loans.

GLOSSARY AND DEFINITIONS: PAGE 2

Prepayment Calculations

SBA Pool prepayment speeds are calculated using the industry convention of Conditional Prepayment Rate, or CPR. CPR is the annualized percentage of the outstanding balance of a pool that is expected to prepay in a given period. For example, a 10% CPR suggests that 10% of the current balance of a pool will prepay each year.

When reporting prepayment data, we break it into seven different original maturity categories: <8 years, 8-10 years, 10-13 years, 13-16 years, 16-20 years and 20+ years. Within these categories we provide monthly CPR and YTD values.

In order to get a sense as to timing of prepayments during a pool's life, we provide CPR for maturity categories broken down by five different age categories: 0-12 months, 13-24 months, 25-36 months, 37-48 months and 48+ months.

As to the causes of prepayments, we provide a graph which shows prepayment speeds broken down by voluntary borrower prepayment speeds, denoted VCPR and default prepayment speeds, denoted as DCPR. The formula for Total CPR is as follows:

$$\text{Total Pool CPR} = \text{VCPR} + \text{DCPR}$$

SBA Libor Base Rate

The SBA Libor Base Rate is set on the first business day of the month utilizing one-month LIBOR, as published in a national financial newspaper or website, plus 3% (300 basis points). The rate will be rounded to two digits with .004 being rounded down and .005 being rounded up.

Please note that the SBA's maximum 7(a) interest rates continue to apply to SBA base rates: Lenders may charge up to 2.25% above the base rate for maturities under seven years and up to 2.75% above the base rate for maturities of seven years or more, with rates 2% higher for loans of \$25,000 or less and 1% higher for loans between \$25,000 and \$50,000. (Allowable interest rates are slightly higher for SBAExpress loans.)

Risk Types

The various risk types that impact SBA pools are the following:

Basis Risk: The risk of unexpected movements between two indices. The impact of this type of risk was shown in the decrease in the Prime/Libor spread experienced in 2007 and 2008.

Prepayment Risk: The risk of principal prepayments due to borrower voluntary curtailments and defaults. Overall prepayments are expressed in CPR, or Conditional Prepayment Rate.

Interest Rate Risk: The risk of changes in the value of an interest-bearing asset due to movements in interest rates. For pools with monthly or quarterly adjustments, this risk is low.

Credit Risk: Losses experienced due to the default of collateral underlying a security. Since SBA loans and pools are guaranteed by the US government, this risk is very small.

Secondary Market First Lien Position 504 Loan Pool Guarantee Program

As part of the American Recovery and Reinvestment Act (AKA the Stimulus Bill), Congress authorized the SBA to create a temporary program that provides a guarantee on an eligible pool of SBA 504 first liens. The program was authorized for a period of two years from the date of bill passage – February, 2009. The eligibility of each loan is dependent on the date of the SBA Debenture funding. To be eligible, the Debenture must have been funded on or after February 17, 2009. The total guarantee allocation is \$3 Billion. HR 5297 provides for a two-year extension from the first pooling month, so that the end date of the program is now **September, 2012**.

The SBA announced that they will begin issuing the first pool guarantees in September, 2010 for early October settlement.

For the purposes of the program, a pool is defined as 2 or more loans. A pool must be either fixed (for life) or adjustable (any period adjustment including 5 or 10 years). If the pool is comprised of adjustable rate loans, all loans must have the same base rate (e.g. Prime, LIBOR, LIBOR Swaps, FHLB, etc.). Finally, each loan must be current for the lesser of 6 months or from the time of loan funding. Congress mandated that this be a **zero subsidy program to the SBA** (and the US taxpayer). The SBA has determined the program cost (management and expected losses) can be covered by an ongoing subsidy fee of .744% for fiscal year 2012.

GLOSSARY AND DEFINITIONS: PAGE 3

SBA 504 Program and Debenture Funding

To support small businesses and to strengthen the economy Congress created the U.S. Small Business Administration (SBA) in 1953 to provide a range of services to small businesses including financing. In 1958 Congress passed the Small Business Investment Act which established what is known today as the SBA 504 loan program.

The 504 loan program provides financing for major fixed assets, such as owner-occupied real estate and long-term machinery and equipment. A 504 project is funded by a loan from a bank secured with a first lien typically covering 50% of the project's cost, a loan from a CDC secured with a second lien (backed by a 100% SBA-guaranteed debenture) covering a maximum of 40% of the cost, and a contribution of at least 10% of the project cost from the small business being financed. The SBA promotes the 504 program as an economic development tool because it is a small-business financing product that generates jobs.

Each debenture is packaged with other CDC debentures into a national pool and is sold on a monthly basis to underwriters. Investors purchase interests in debenture pools and receive certificates representing ownership of all or part of a debenture pool. SBA uses various agents to facilitate the sale and service of the certificates and the orderly flow of funds among the parties involved. The debenture sales are broken into monthly sales of 20 year debentures and bi-monthly sales of 10 year debentures.

It is the performance of these debenture pools that we track in the CPR Report on a monthly basis.

Cloud Computing and the Banking Industry

What is Cloud Computing?

For many people and organizations, the term "cloud computing" is new and unfamiliar. However, it is a technology that has been used consistently since the 1950s. Many of us use cloud computing every day without even realizing it. Whenever we login to Facebook, send an email from a Gmail account, or use an enterprise planning systems, such as Oracle and Salesforce.com, we are accessing the cloud.

In simple terms, cloud computing means using hardware and software resources delivered as a service over a network. Most frequently, the network used is the Internet. Cloud-based applications are accessed through a web browser such as Microsoft's Internet Explorer and Google's Chrome, while data is stored on secure servers in custom designed data centers located throughout the United States and around the world. Businesses that use cloud computing enjoy many advantages, including an ability to get services and employees up and running faster because there is no software that needs to be downloaded and installed. Maintenance of cloud computing applications is easier, because the software does not need to be installed on each user's computer and can be accessed from multiple computers and devices. Proper cloud deployment can also provide the benefits of cost savings, better IT services, less maintenance, and higher levels of reliability.

Cloud Banking

As the banking industry evolves and adapts to changes in the competitive environment, banks will find it advantageous to move their data into the cloud. In fact, many banks are already in the cloud and just don't realize it, with data stored on Jack Henry and FIS systems.

The combination of the cloud's low cost and high scalability will help improve customer service, day-to-day operations, regulatory compliance, and the speed at which banks can operate, while reducing technology equipment and management costs.

Quite simply, cloud banking allows financial institutions to provide a more affordable and customized dialogue with their customers, regulators, employees and business partners.

SBI Pool and IO Strip Indexes

Through a joint venture called Small Business Indexes, Inc. or SBI, GLS and Ryan ALM introduced a group of total return indexes for SBA 7a pools and I/O strips with history going back to 1/1/2000.

Why did we do this?

Indexes have been around since 1896 when the Dow Jones Industrial Average was introduced. They have grown in importance to the financial markets, whereby today \$6 trillion are invested in Index Funds throughout the world.

Continued on the following pages.

GLOSSARY AND DEFINITIONS: PAGE 4

SBI Pool and IO Strip Indexes...Continued

The reasons for having investment indexes are fivefold:

1. **Asset Allocation Models:** Asset Allocation usually accounts for over 90% of a client's total return and becomes the most critical asset decision. Such models use 100% index data to calculate their asset allocations. Bond index funds are the best representation of the intended risk/reward of fixed income asset classes.
2. **Transparency:** Most bond index benchmarks publish daily returns unlike active managers who publish monthly or even quarterly returns usually with a few days of delinquency. Such transparency should provide clients with more information on the risk/reward behavior of their assets so there are no surprises at quarterly asset management review meetings.
3. **Performance Measurement:** Creates a benchmark for professional money managers to track their relative performance.
4. **Dictates Risk/Reward Behavior:** By analyzing historical returns of an index, an investor can better understand how an asset class will perform over long periods of time, as well as during certain economic cycles.
5. **Hedging:** An investment index can provide a means for hedging the risk of a portfolio that is comprised of assets tracked by the index. An example would be hedging a 7a servicing portfolio using the SBI I/O Strip Index.

By creating investment indexes for SBA 7a pool and IO strips, these investments can become a recognized asset class by pension funds and other large investors who won't consider any asset class in their asset allocation models that does not have a benchmark index.

An additional use for the I/O index could be to allow 7a lenders to hedge servicing portfolios that are getting large due to production and the low prepayment environment. This increase in exposure to 7a IO Strips would be welcome by IO investors who are constrained by the amount of loans that are stripped prior to being pooled.

How are the indexes calculated?

The rules for choosing which outstanding pools are eligible for both the pool and IO indexes are the following:

Pool Size:

- \$5 million minimum through 1/1/2005.
- \$10 million minimum after 1/1/2005.

Pool Structure:

- Minimum of 5 loans inside the pool.
- Minimum average loan size of \$250,000.

Pool Maturity:

- Minimum of 10 years of original maturity.
- Sub indices for 10-15 years and 15-25 year maturities.

The rules for remaining in the indices are the following:

Pool Size:

- Minimum pool factor of .25
- Factor Updates in the Indices are on the first of the month, based on the Colson Factor Report that is released in the middle of the previous month.

Pool Structure:

- Minimum of 5 loans inside the pool.

We have produced two weightings for each pool in the various indexes, "Actual" and "Equal":

"Actual" weighted Indices:

- The actual original balance of each pool is used to weight the pool in the index.
- An index for all eligible pools, as well as one for 10-15 years and one for 15-25 years of original maturity.
- A total of 3 actual weighted sub-indices.

"Equal" weighted Indices:

- An original balance of \$10 million is assigned to each pool, regardless of its true size.
- An index for all eligible pools, as well as one for 10-15 years and one for 15-25 years of original maturity
- A total of 3 equal weighted sub-indices.

GLOSSARY AND DEFINITIONS: PAGE 5

SBI Pool and IO Strip Indexes...Continued

This equates to a total of (6) Pool sub-indices. We will refer to them on a go-forward basis as the following:

Actual Weighting:

- All 10-25 year in original maturity pools "All Actual"
- 10-15 year in original maturity pools "Short Actual"
- 15-25 year in original maturity pools "Long Actual"

Equal Weighting:

- All 10-25 year in original maturity pools "All Equal"
- 10-15 year in original maturity pools "Short Equal"
- 15-25 year in original maturity pools "Long Equal"

Return Calculations

Each index is tracked by its value on a daily basis, as well as the components of return.

Income Component

- Daily return is calculated for the contribution of interest earned.

Mark-to-Market Component

- Daily return is calculated for the contribution of Mark-To-Market changes.

Scheduled Principal Component

- Daily return is calculated for the contribution of normal principal payments. Only impacts the first of the month.

Prepaid Principal Component

- Daily return is calculated for the contribution of prepaid principal payments. Only impacts the first of the month.

Total Principal Component

- Daily return is calculated for the contribution of all principal payments. Only impacts the first of the month.

The formula for Total Daily Return is as follows:

$$\text{Total Daily Return} = \text{Income Return} + \text{MTM Return} + \text{Principal Return}$$

The Principal Return is generated using the following formula:

$$\text{Principal Return} = \text{Prepaid Principal Return} + \text{Scheduled Principal Return}$$

The I/O Strip Indexes are a bit more involved, since we have to calculate the pricing multiple, as well as the breakdown between income earned and return of capital from interest accruals and payments. Here are the specific rules for the I/O Strip Indexes:

- The I/O Strip Indices utilize the same pools as the Pool Indices.
- Each pool is synthetically "stripped" upon entering the I/O Indices.
- For the equal and actual weighted indices and the maturity sub-indices (10-15 and 15-25), the pools are split into two even buckets utilizing the pool reset margins. The bucket with the higher margins we refer to as the "Upper Bucket" and the lower margin pools are in the "Lower Bucket".
- The weighted average reset margin and pool MTM is calculated for each bucket. The MTM is the same one utilized in the pool indices.
- The weighted average price of the Lower Bucket is subtracted from the Upper Bucket. The same thing is done for the weighted average reset margin.
- The MTM difference is divided by the reset margin difference, giving us the pricing multiple by maturity and weighting.
- The end result is a pricing multiple for equal and actual weighting for 10-15 year pools and 15-25 year pools, totaling (4) distinct multiples.
- Not all interest received is considered earned income, therefore interest received by the stripped pools is divided into earnings and return of capital, utilizing OID accounting rules.
-

GLOSSARY AND DEFINITIONS: PAGE 6

SBI Pool and IO Strip Indexes...Continued

- The OID accounting rule create a straight-line return of capital upon entry into the index and the difference between the return of capital and interest received is earned income.
- Fundamentally, high prepayments can push more received interest into return of capital, thus limiting earned income. Excellent prepayment performance can generate large amounts of earned income over time.

Once the return percentages are determined for each day, it is then applied to the previous day's index level, in order to calculate the index levels for that day.

Supporting Calculations

To aid in the analysis of the indexes, we track (22) distinct calculations for each of the (6) sub-indices:

Size

- Pool count and total outstanding balance

Structure

- Weighted average issue date, maturity date, reset date, maturity months, remaining months, age, coupon, reset margin, strip percent (strip indexes only).

Price and Yield

- Weighted average pool price, bond-equivalent yield, strip discount rate, multiple and strip pricing (strip indexes only)

Other Calculations

- CPR assumption, weighted average life, modified duration, index duration, strip duration and strip return of capital average life.
-

POWERED BY:

Phone: (216) 456-2480
 Fax: (216) 456-2481
 Web Site: www.glsolutions.us
 E-mail: info@gl solutions.us

Government Loan Solutions

812 Huron Road
 Cleveland, OH 44115

Staff

Scott Evans
Bob Judge
Tim Turritin

CPR Report Staff:

Robert E. Judge II, Production Assistant

www.glsolutions.us

Government Loan Solutions' CPR Report is a monthly electronic newsletter published by Coleman Publishing.

The opinions, unless otherwise stated, are exclusively those of the editorial staff.

This newsletter is not to be reproduced or distributed in any form or fashion, without the express written consent of Coleman or Government Loan Solutions.

Government Loan Solutions' CPR Report is distributed in pdf format via e-mail. Spreadsheets relating to the presented data are available to paid subscribers upon request.

The subscription to the Government Loan Solutions' "CPR Report" is free to all members of the SBA Community.

To subscribe, please contact Coleman at (800) 617-1380 or via email at:

bob@colemanpublishing.com

Government Loan Solutions, Inc. (GLS) was founded by three former Bond Traders in Cleveland, OH. Current partners, Scott Evans and Bob Judge, possess a combined 50 years experience in the institutional fixed income markets, 30 of which are in the loan securitization business. GLS formally began operations in January, 2007. Our mission is as follows:

"The purpose of Government Loan Solutions is to bring greater efficiency, productivity and transparency to the financial markets. Through the use of proprietary technology, we intend to aid lenders in all aspects of their small business lending, help loan securitizers be more productive in their operational procedures and provide quality research to the investor community."

Services available include:**Lenders:**

- *Manage loan sales to the secondary market*
- *Process loan settlements via our electronic platform, E-Settle*
- *Third-Party servicing and non-guaranteed asset valuation*
- *Model Validation*
- *Specialized research projects*
- *Mortgage Servicing Valuation*

Loan Securitizers:

- *Manage loan settlements and pool formation*
- *Loan and IO accounting*
- *Loan, Pool and IO Mark-To-Market*
- *Specialized research projects*

Institutional Investors:

- *Loan, Pool, and IO Mark-To-Market*
- *Specialized research projects*
- *Portfolio consulting*

For additional information regarding our products and capabilities, please contact us at:

Phone: (216)456-2480 E-mail at: info@gl solutions.us web: www.glsolutions.us

EDITORIAL DISCLAIMER

DISCLAIMER OF WARRANTIES – GOVERNMENT LOAN SOLUTIONS (GLS) MAKES NO REPRESENTATIONS OR WARRANTIES REGARDING THE ACCURACY, RELIABILITY OR COMPLETENESS OF THE CONTENT OF THIS REPORT. TO THE EXTENT PERMISSIBLE BY LAW, GLS DISCLAIMS ALL WARRANTIES, EXPRESS OR IMPLIED, INCLUDING BUT NOT LIMITED TO IMPLIED WARRANTIES OF MERCHANTABILITY AND FITNESS FOR A PARTICULAR PURPOSE.

Limitation of Liability - GLS shall not be liable for damages of any kind, including without limitation special or consequential damages, arising out of your use of, or reliance upon, this publication or the content hereof.

This Report may contain advice, opinions, and statements of various information providers and content providers. GLS does not represent or endorse the accuracy or reliability of any advice, opinion, statement or other information provided by any information provider or content provider, or any user of this Report or other person or entity. Reliance upon any such opinion, advice, statement, or other information shall also be at your own risk.

Prior to the execution of a purchase or sale of any security or investment, you are advised to consult with investment professionals, as appropriate, to verify pricing and other information. Neither GLS, its information providers or content providers shall have any liability for investment decisions based upon, or the results obtained from, the information provided. Neither GLS, its information providers or content providers guarantee or warrant the timeliness, sequence, accuracy, or completeness of any such information. Nothing contained in this Report is intended to be, nor shall it be construed as, investment advice.